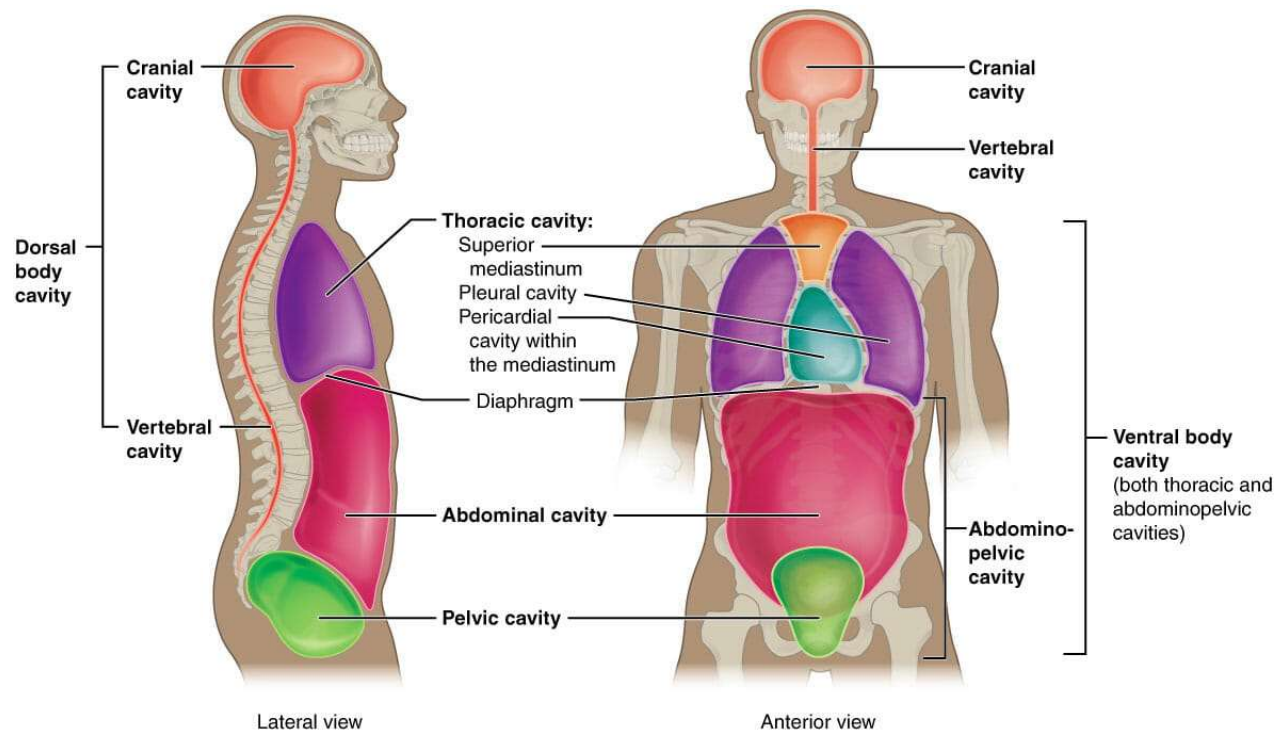


Thoracic and Abdominal-pelvic Cavities (Visceral & Parietal Membranes)



Identify these lab objective in this test module:

Visceral & parietal pleura

Visceral & parietal pericardium

Epicardium & endocardium

Pericardial & peripleural cavities

Visceral & parietal peritoneum

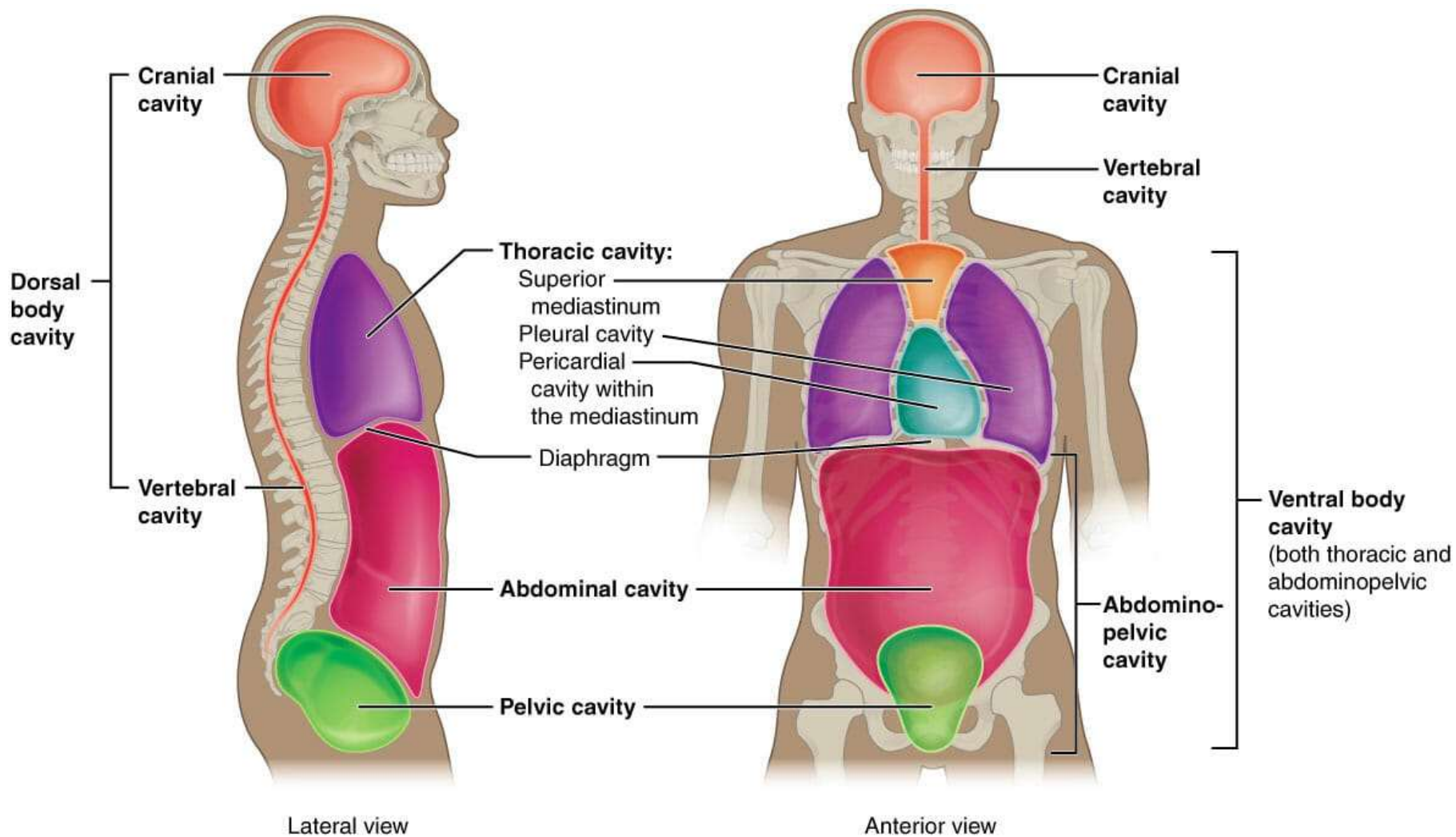
Retro-peritoneum position

Note the following:

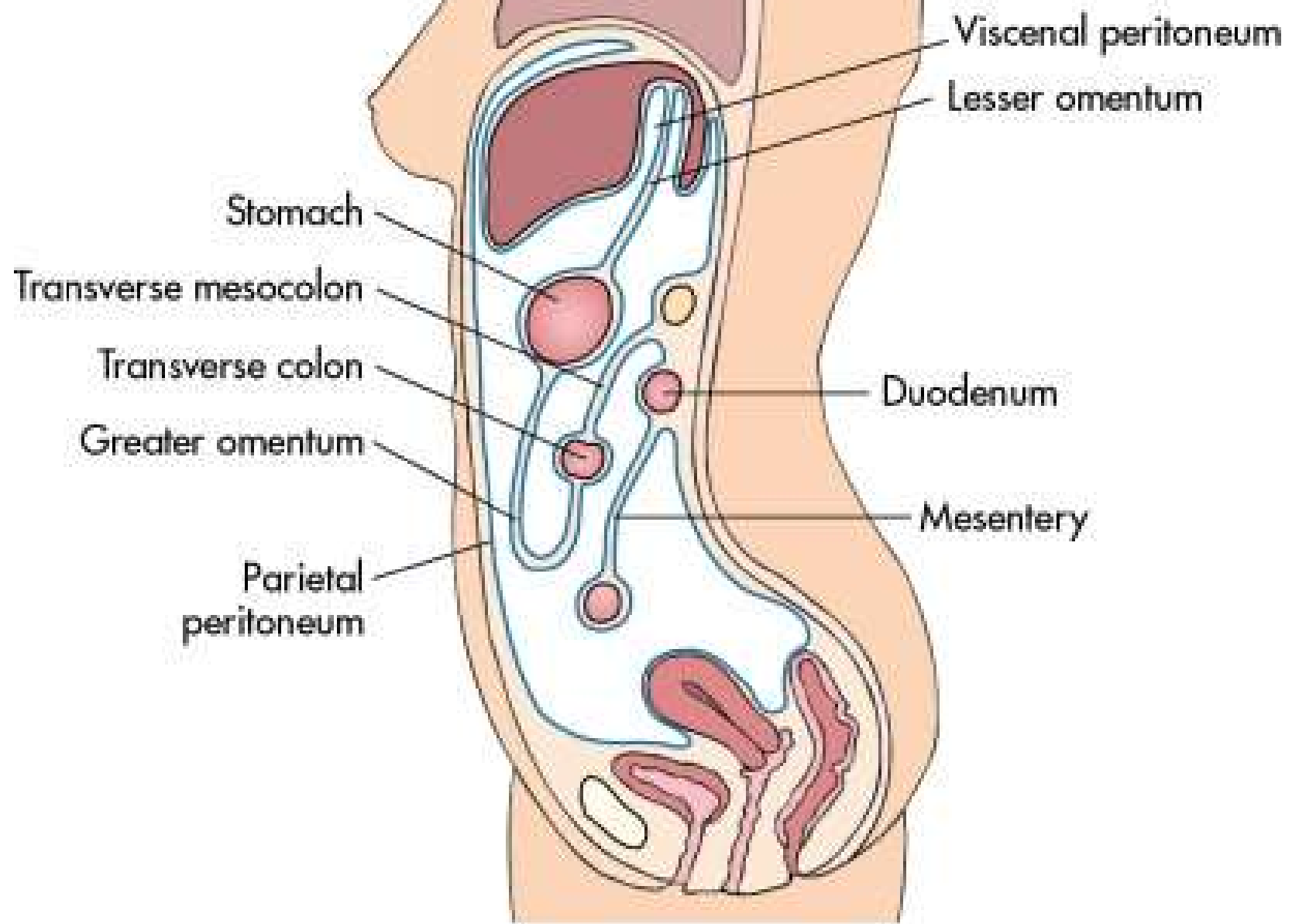
The left lung parenchyma is partially deflated in transverse plate

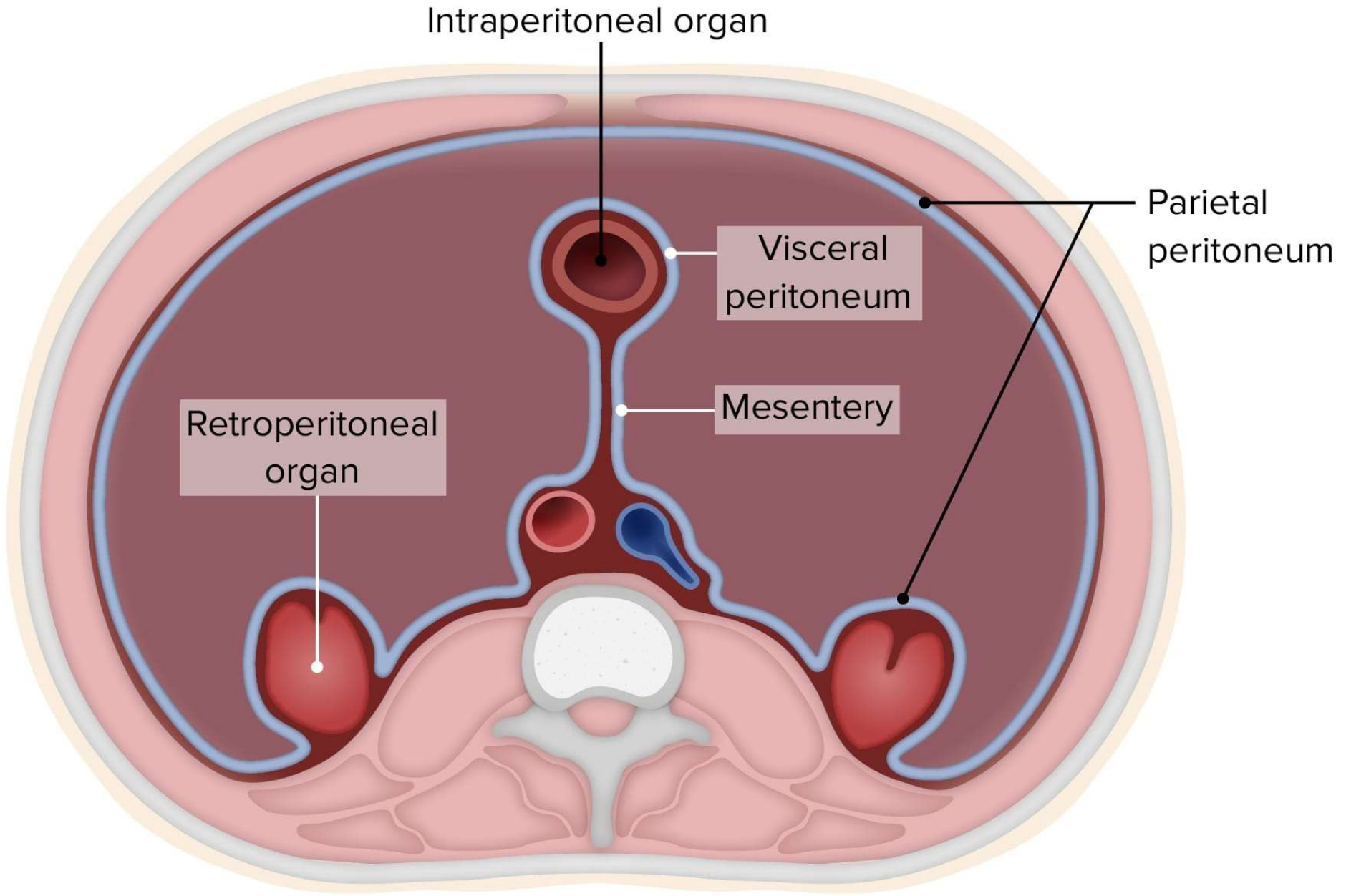
The different number of lobes in right and left lungs

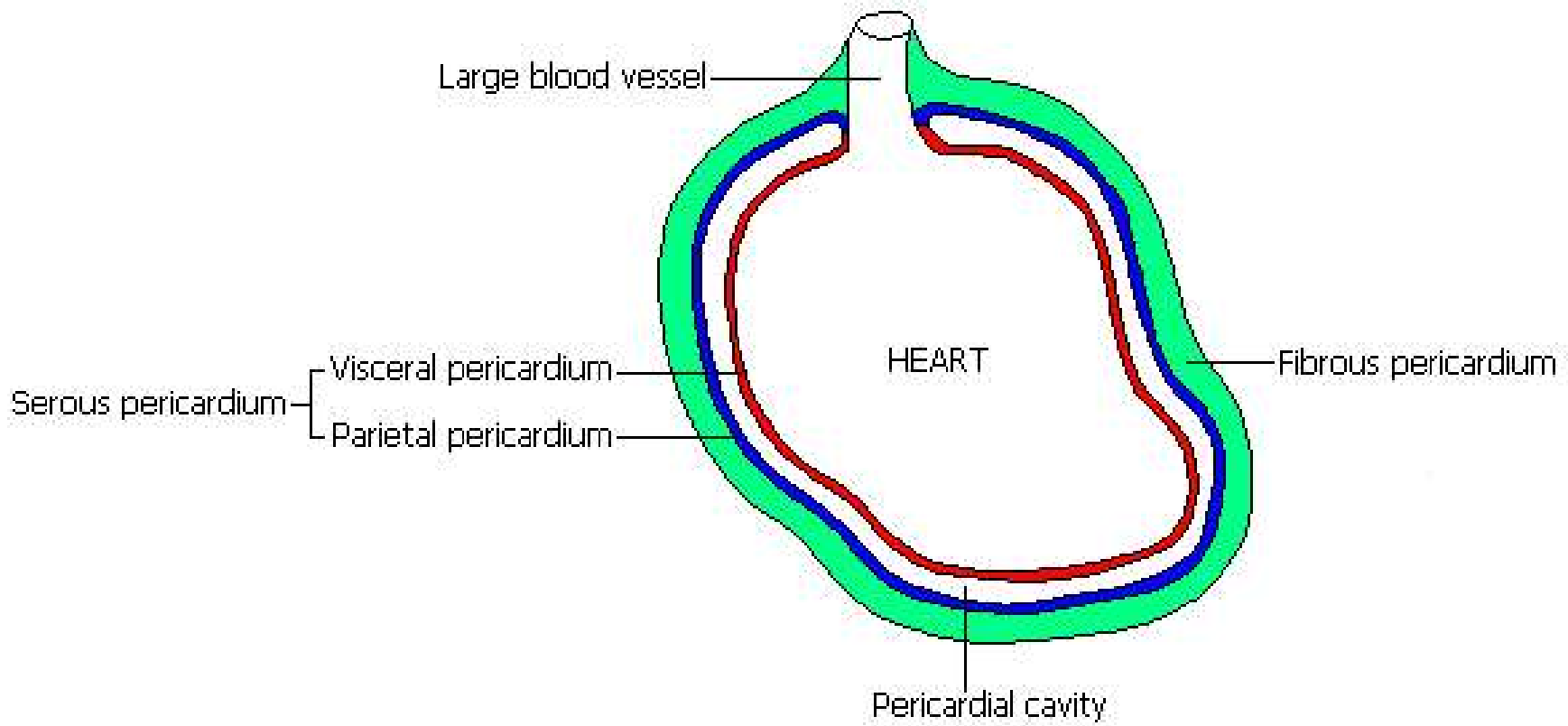
The position of heart with apex projecting into left pleural cavity

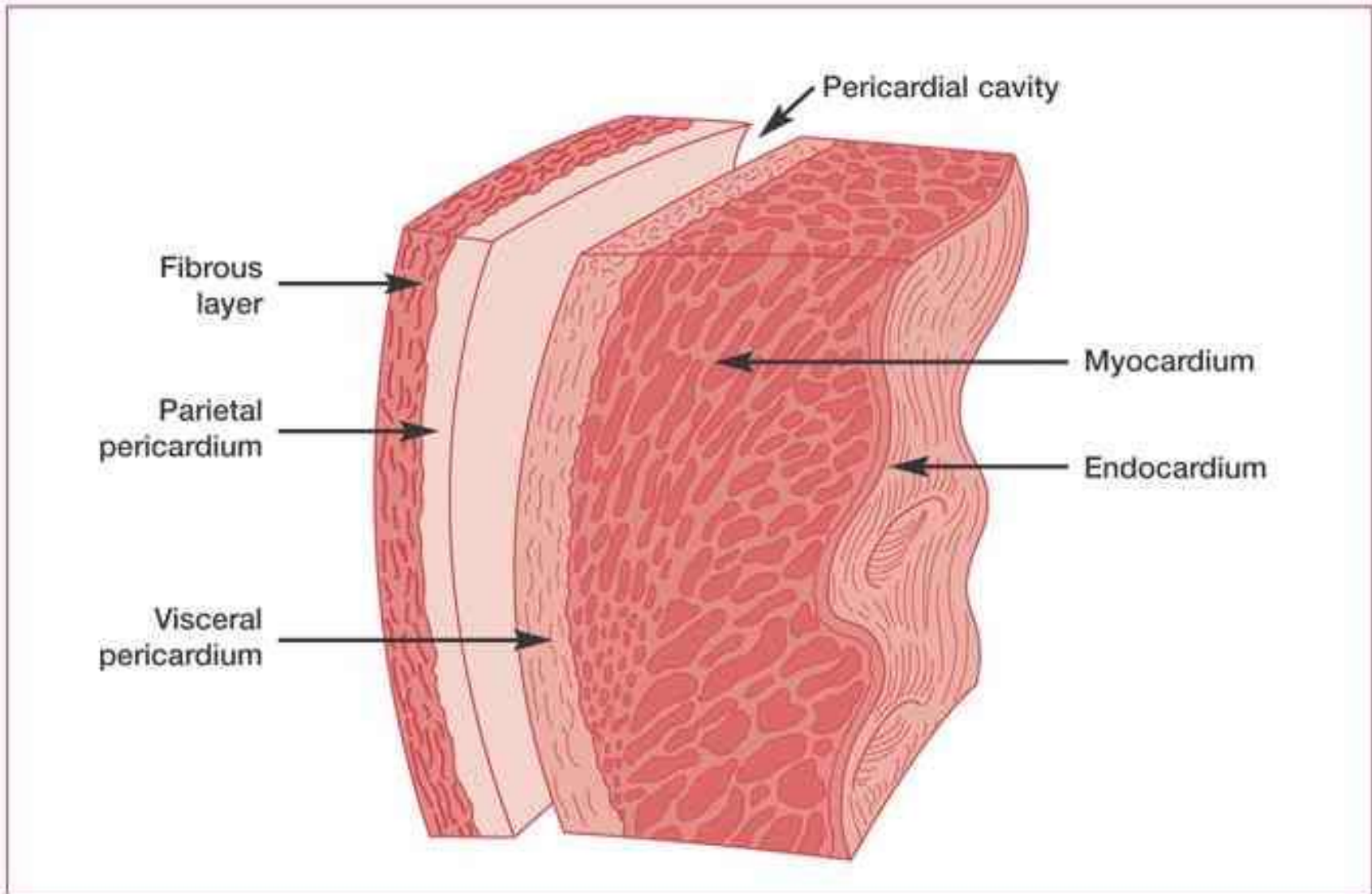


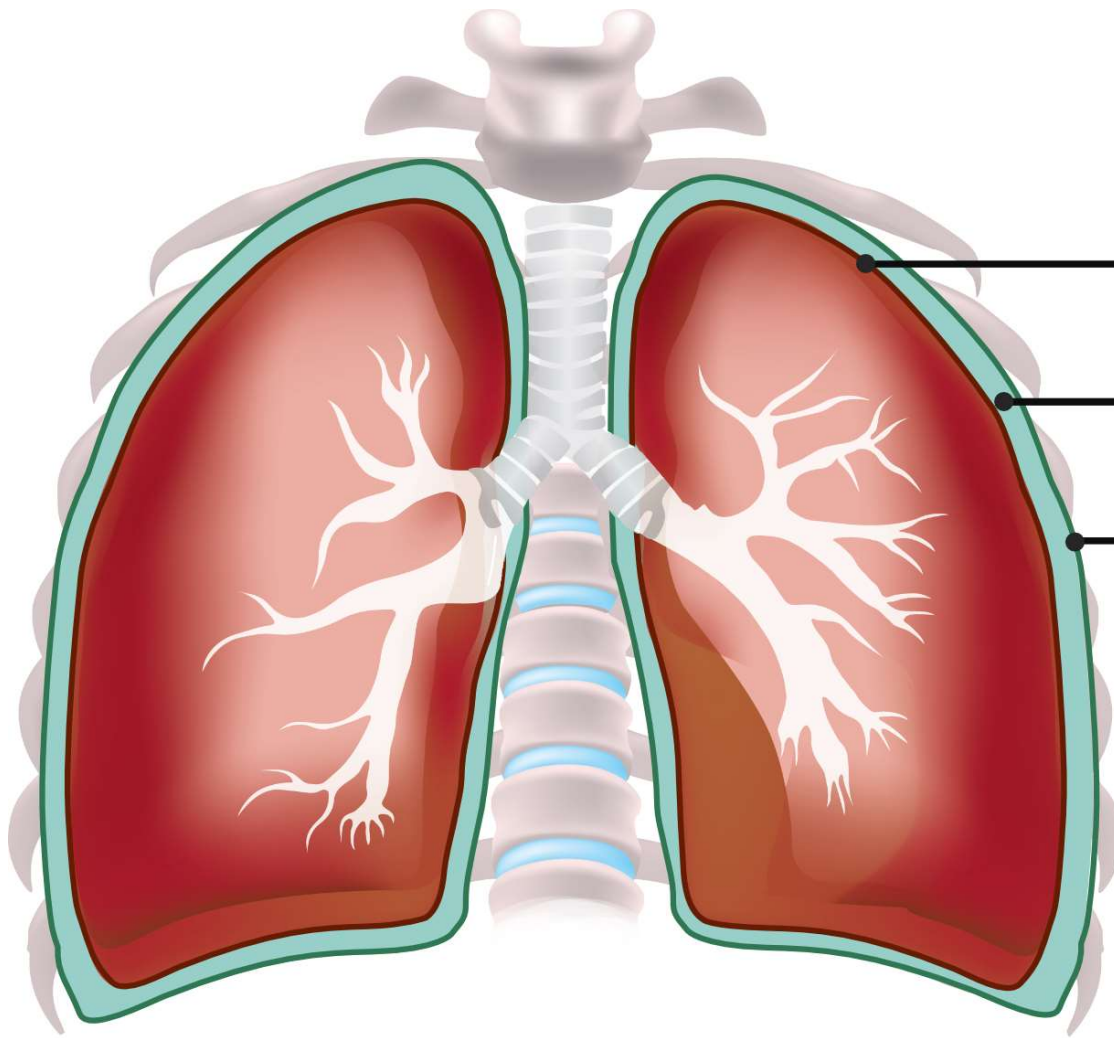
Note content and subdivisions of dorsal and ventral body cavities.











Visceral pleura

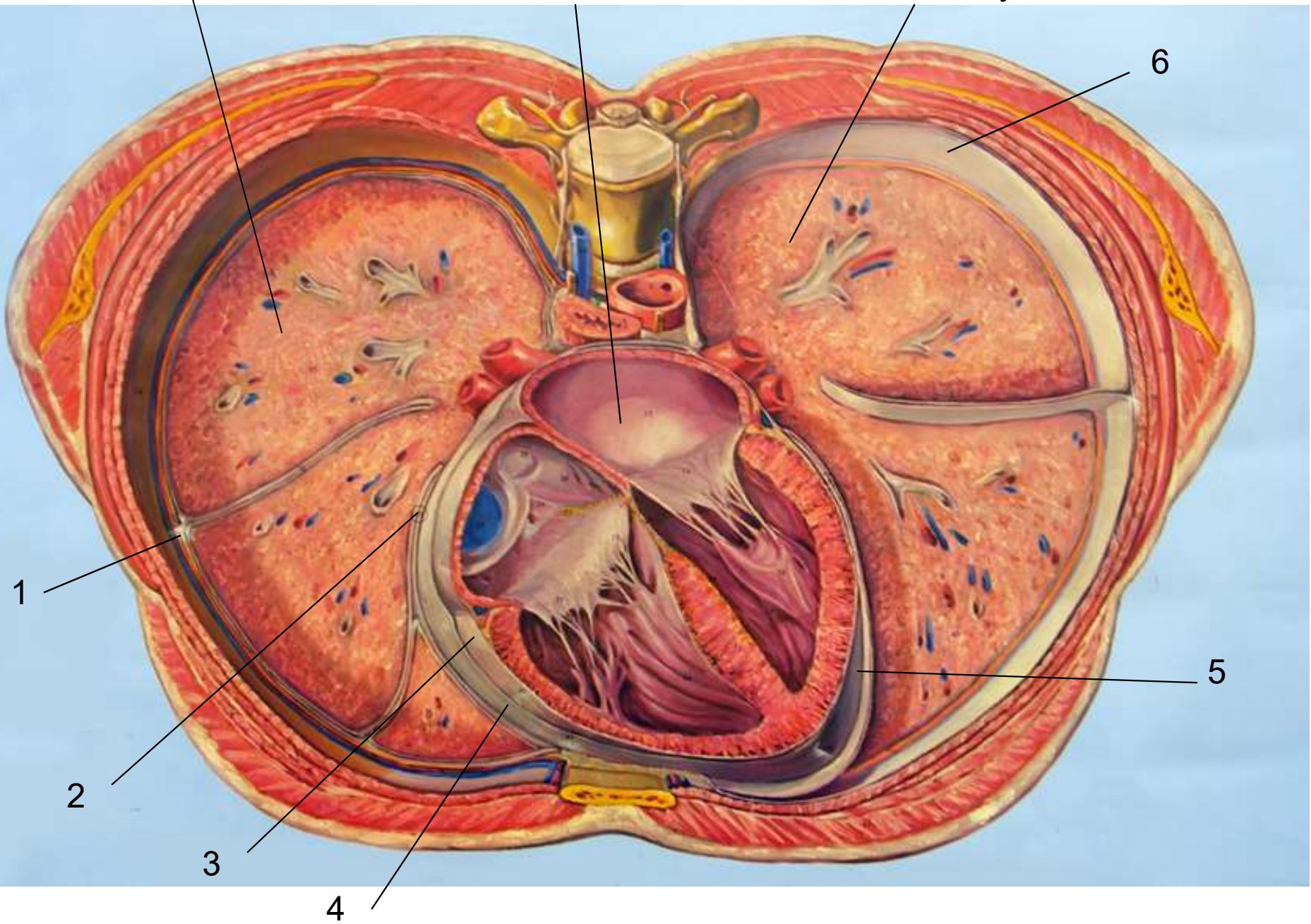
Pleural cavity

Parietal pleura

7 What cavity?

8 What cavity?

9 What cavity?



1

2

3

4

5

6

1. Parietal pleura
2. Visceral pleura
3. Visceral pericardium (epicardium)
4. Parietal pericardium
5. Pericardial cavity
6. Left pleural cavity
7. Right pleural cavity
8. Mediastinum
9. Left pleural cavity