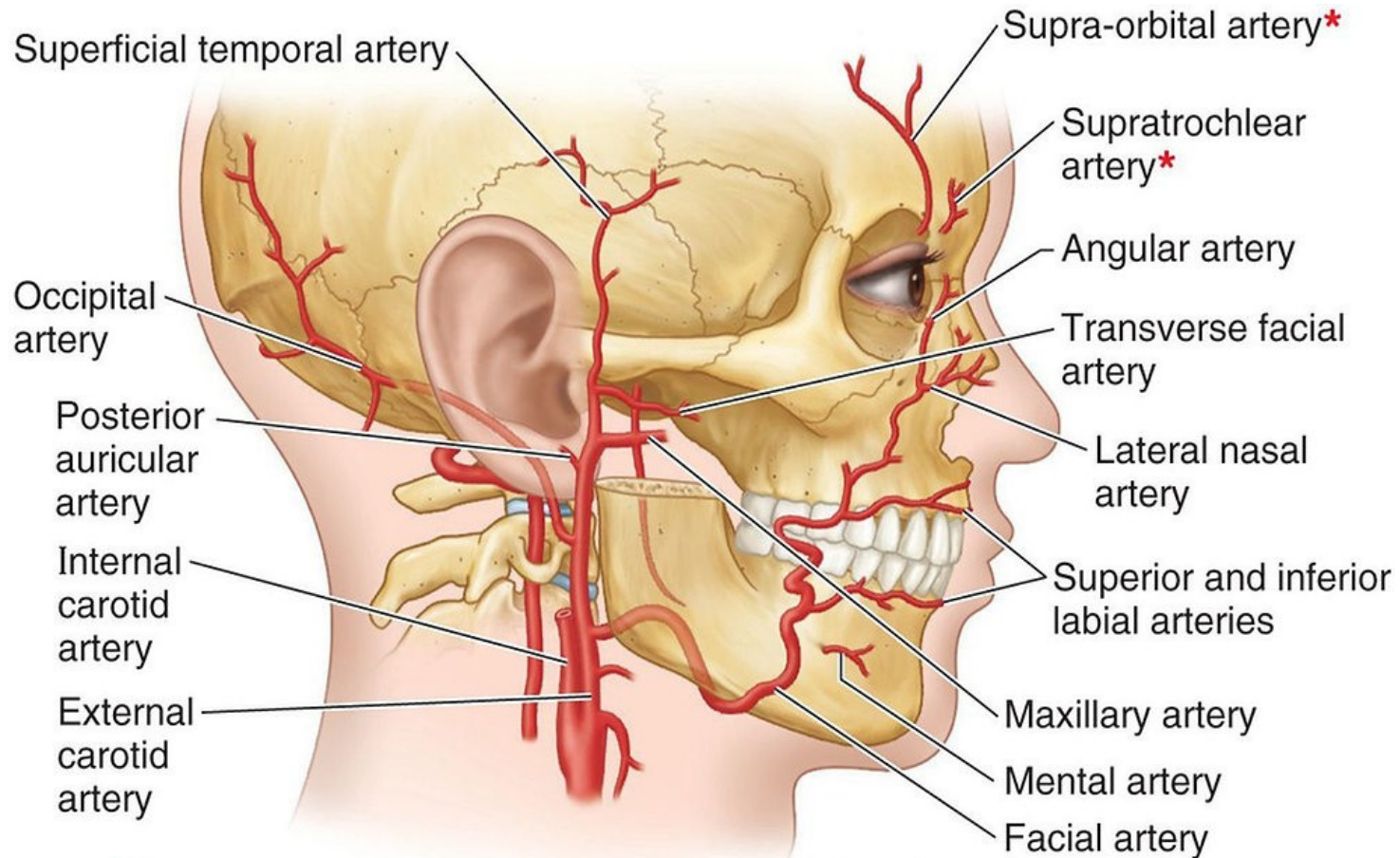


# Arteries and Veins

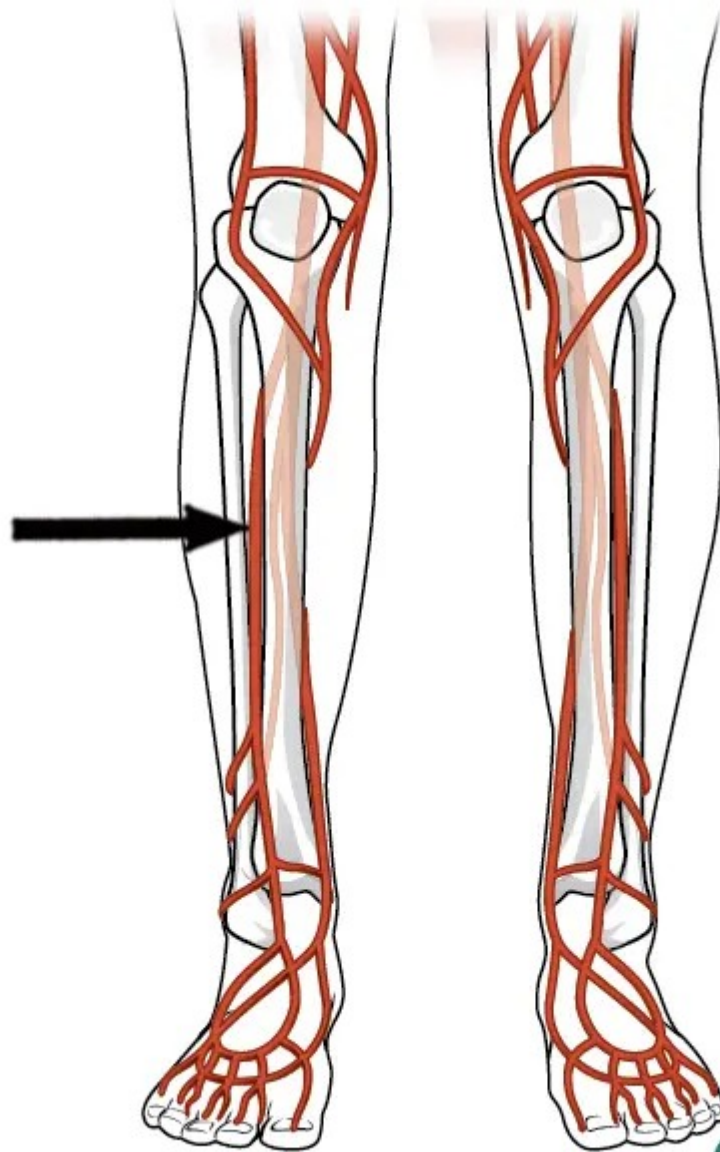
## Lab Learning Objectives

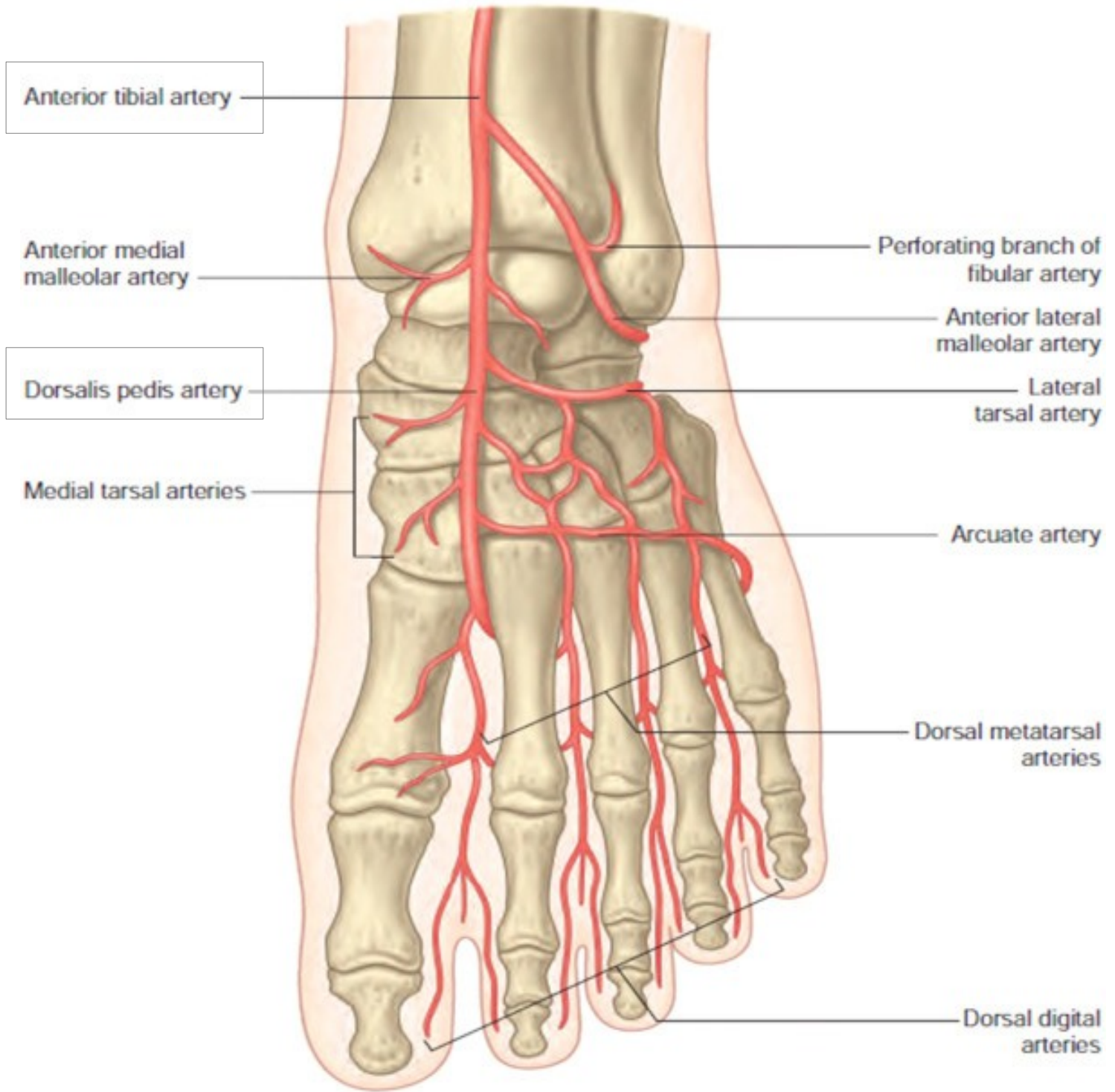


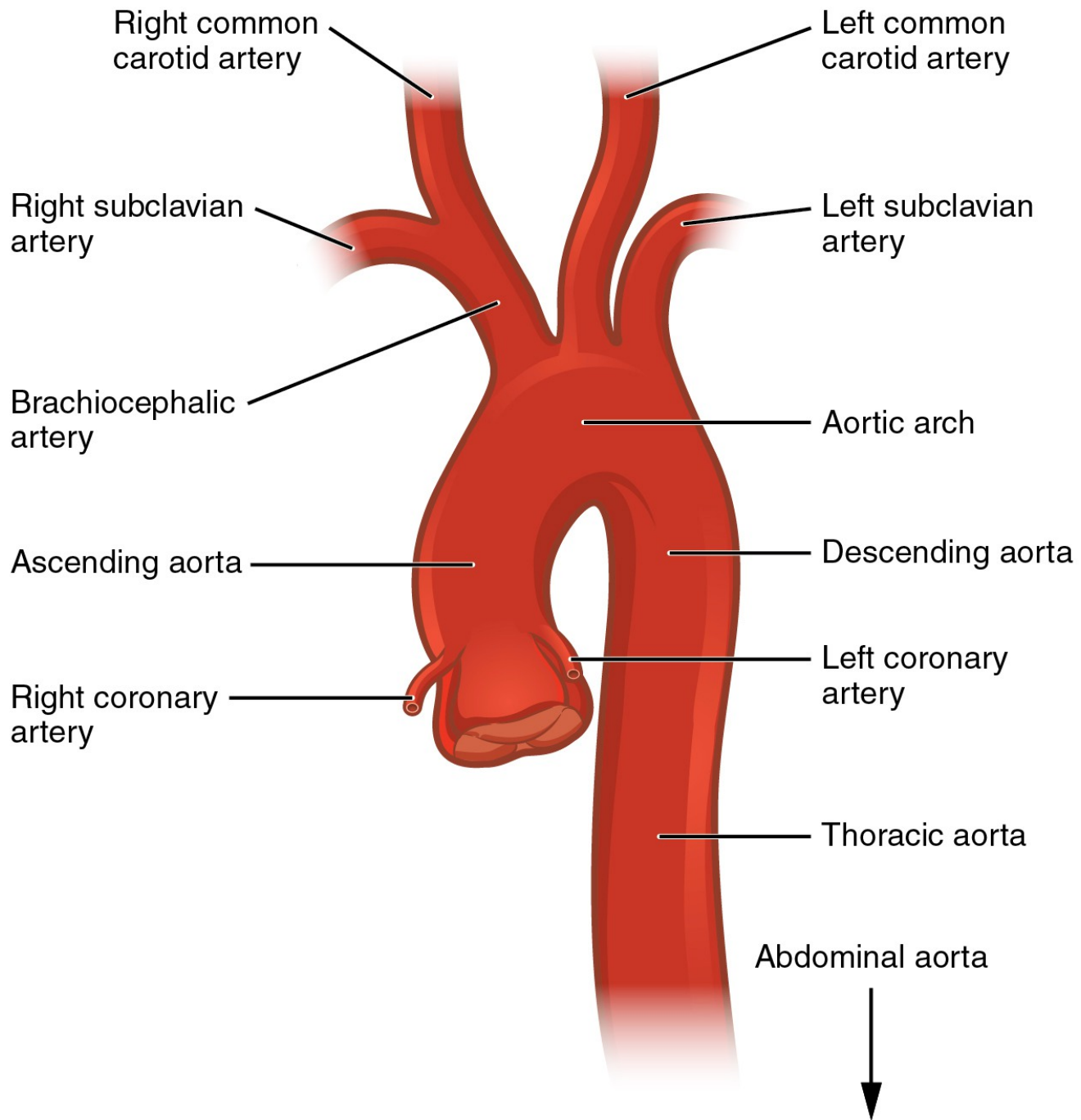
\*Source = internal carotid artery; all other labeled arteries are from external carotid

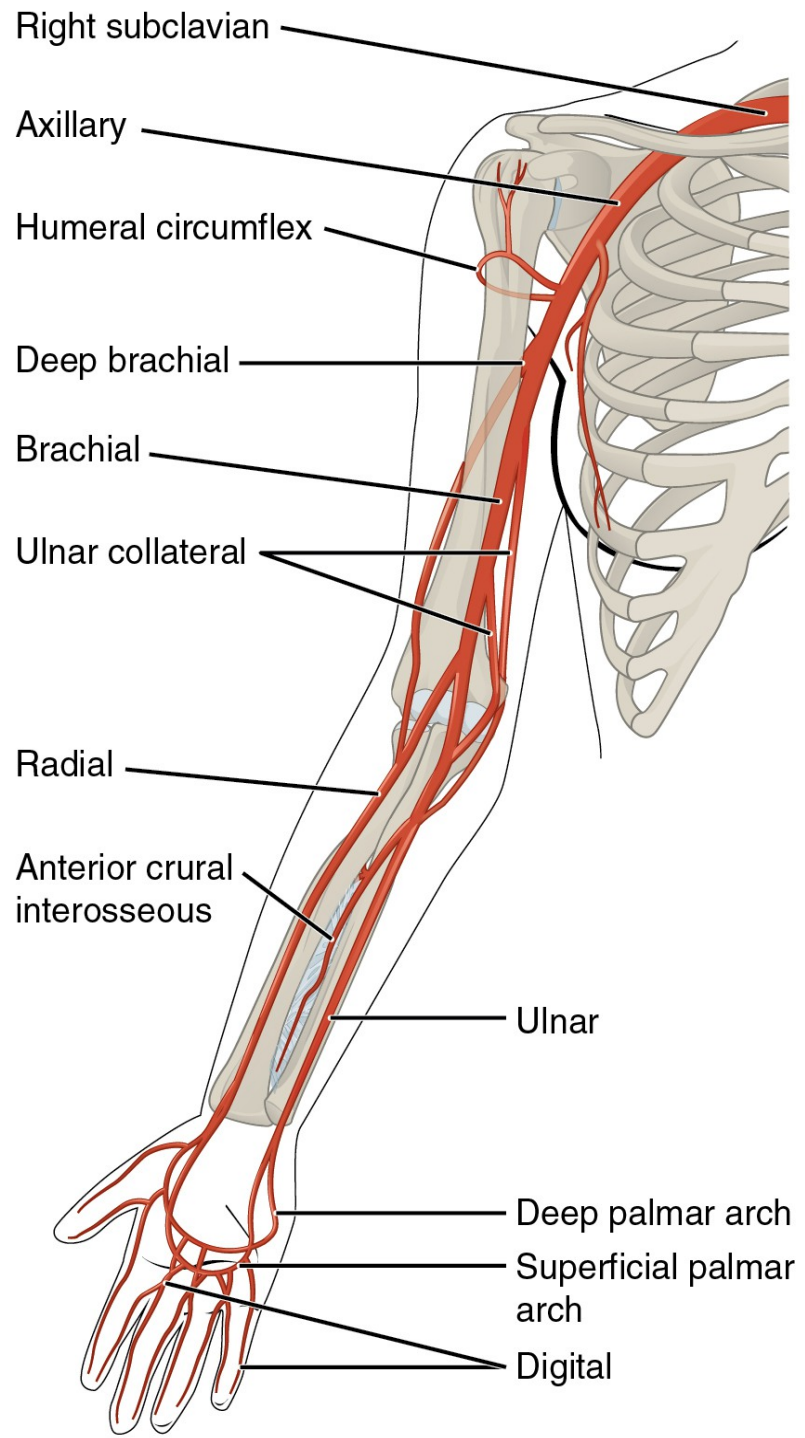
# Arteries Learning Objectives

Anterior tibial artery

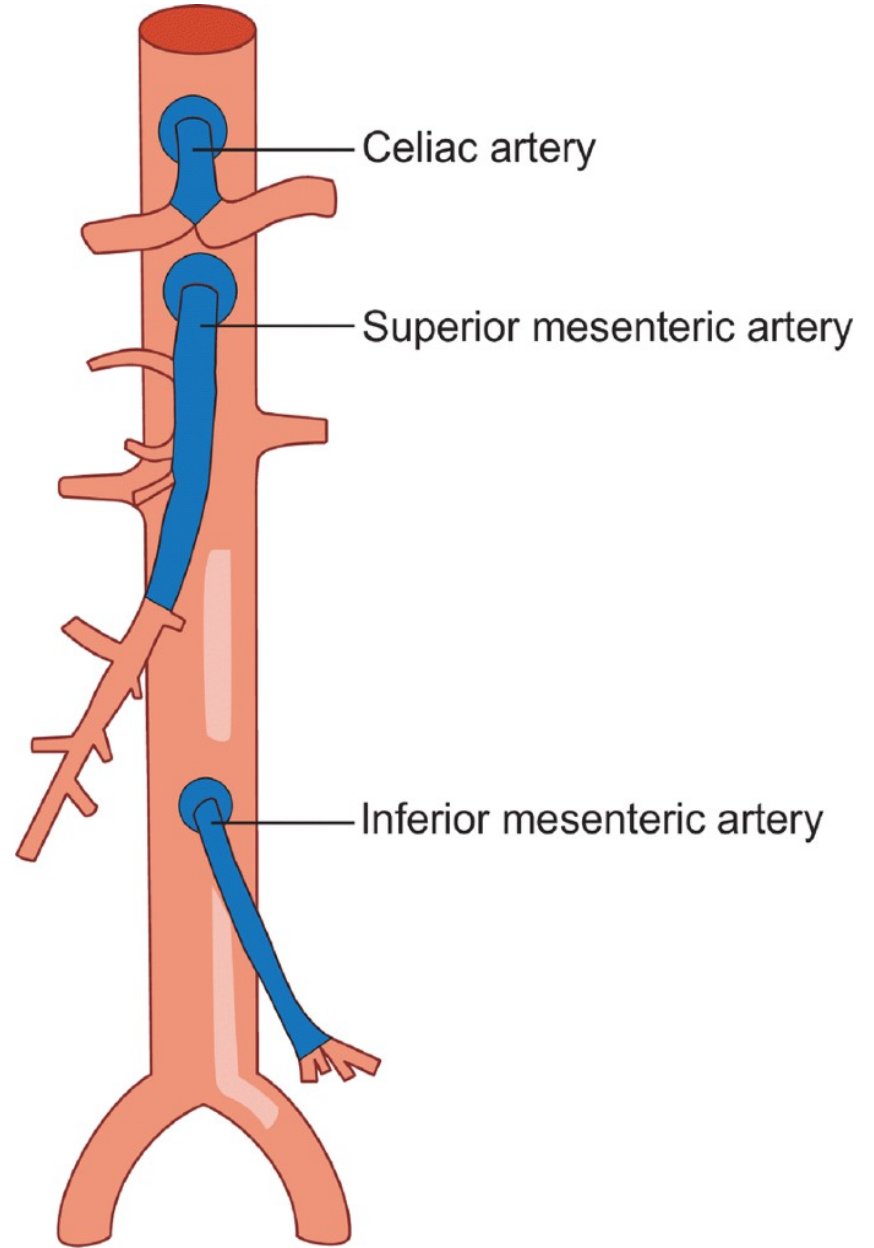
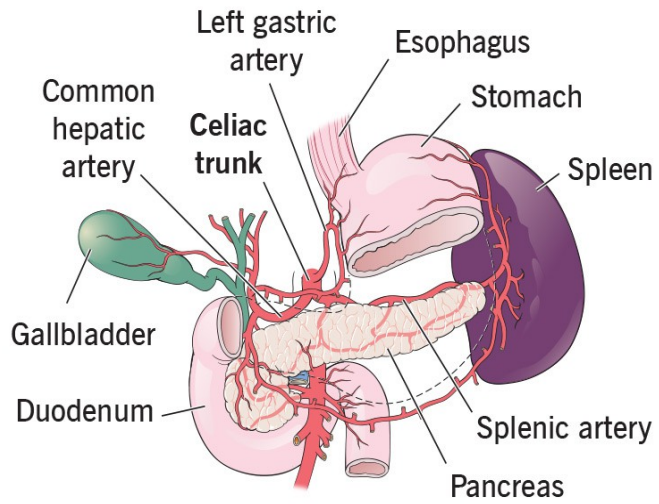
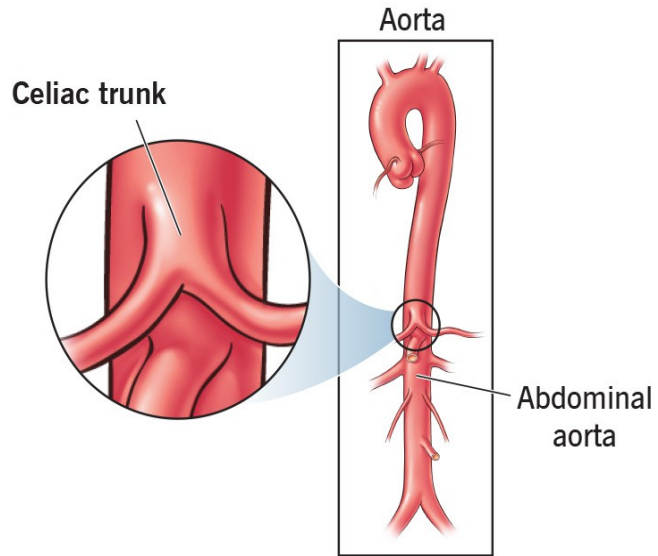


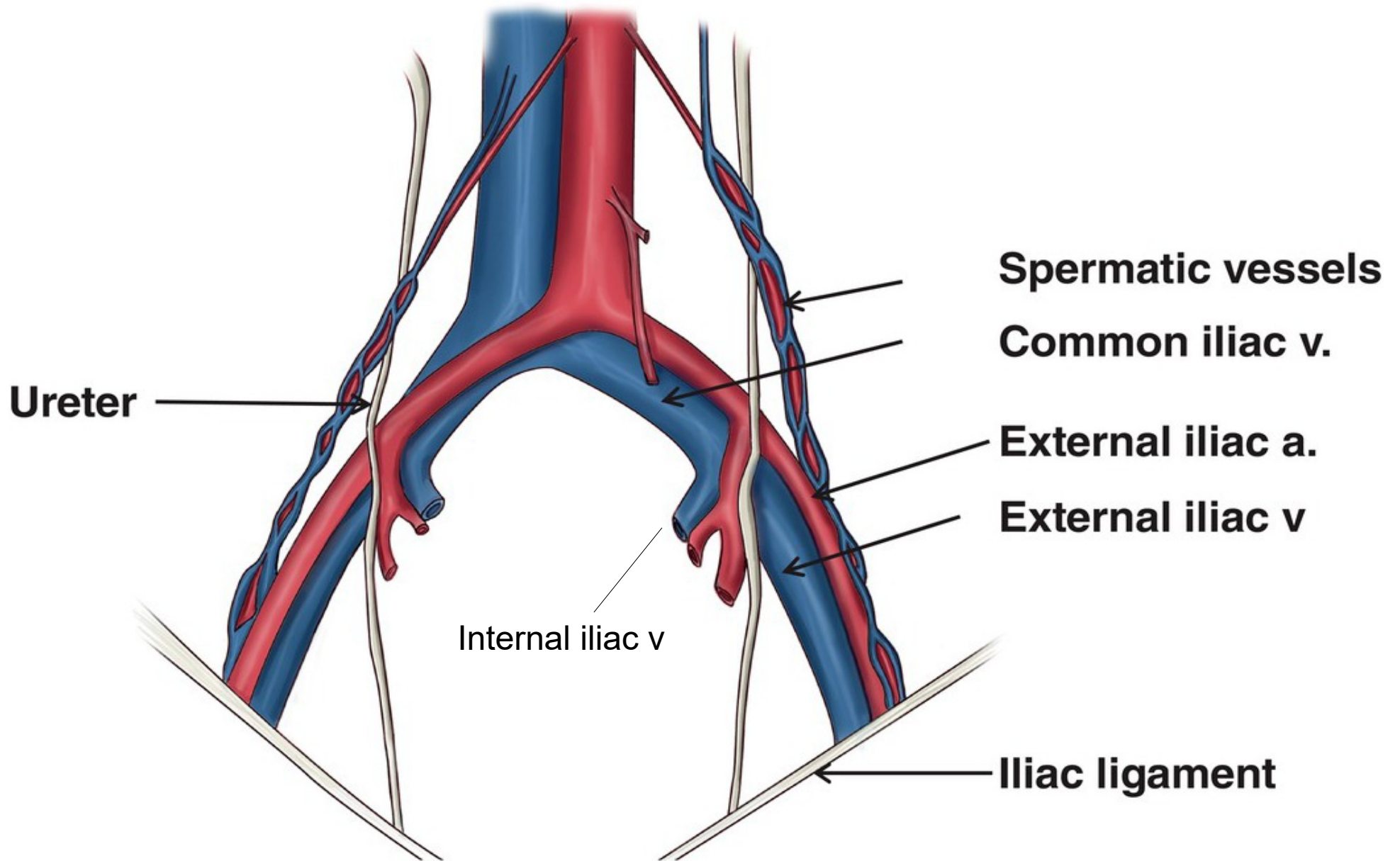




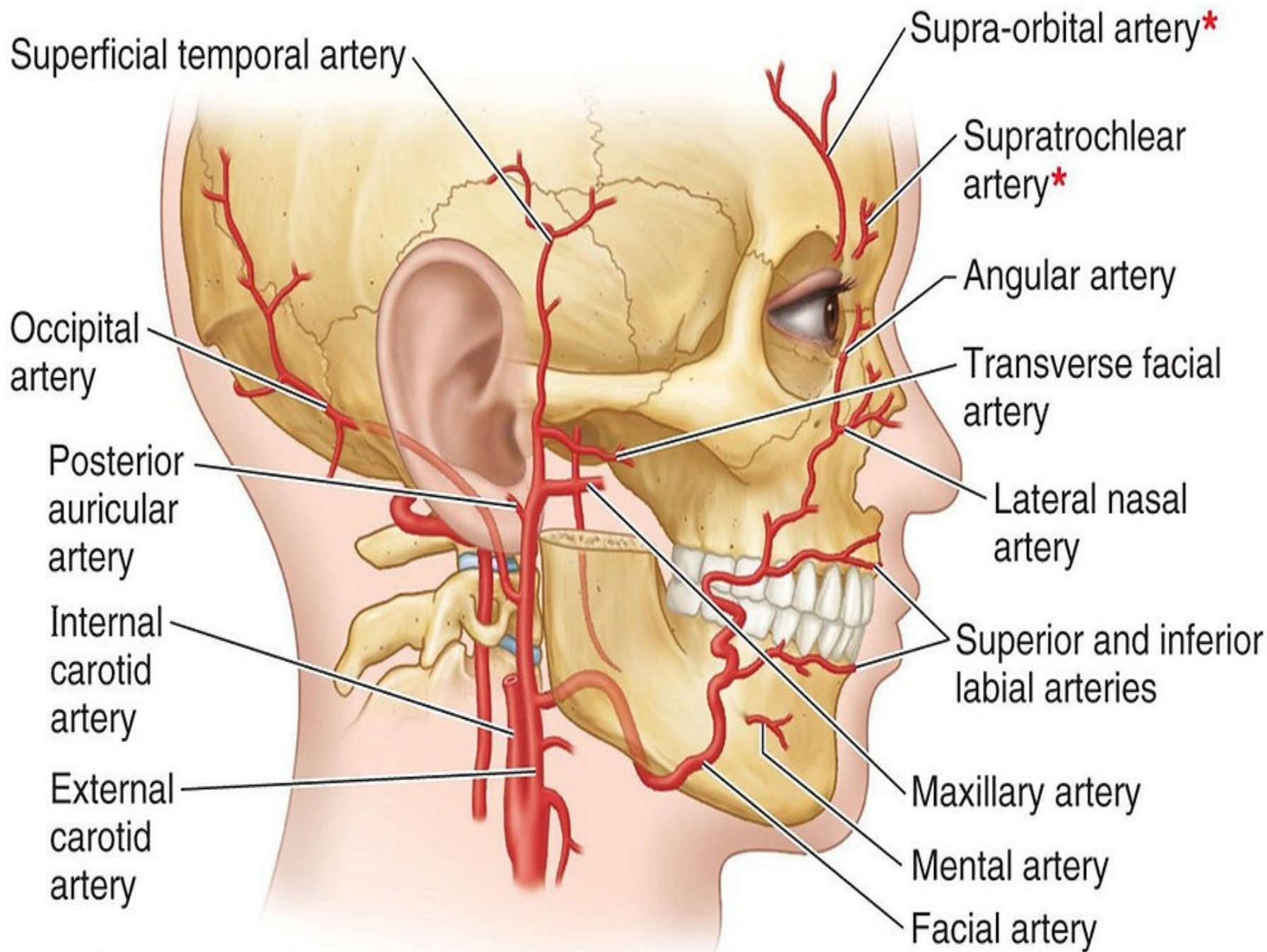


# Celiac trunk

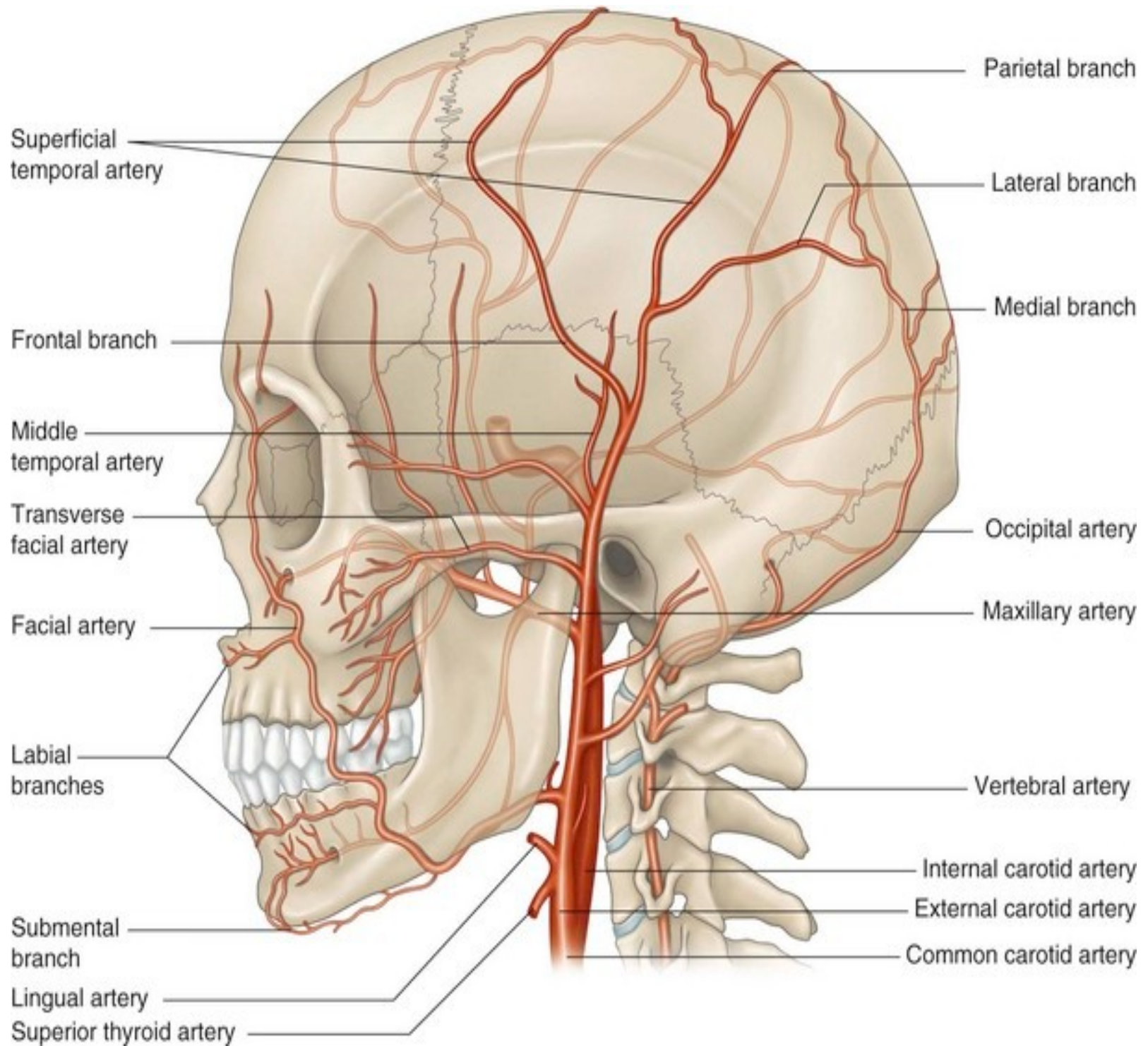


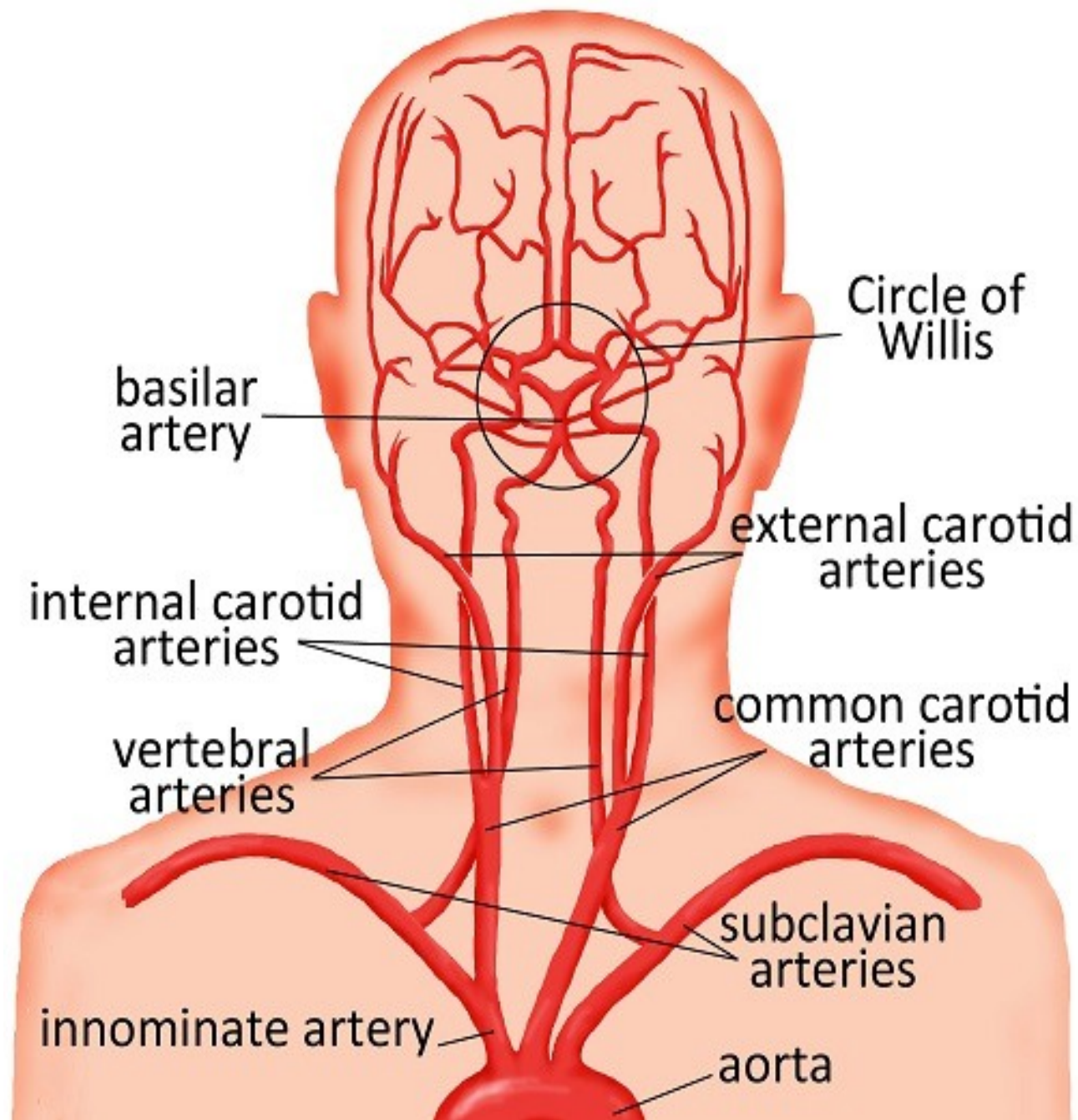


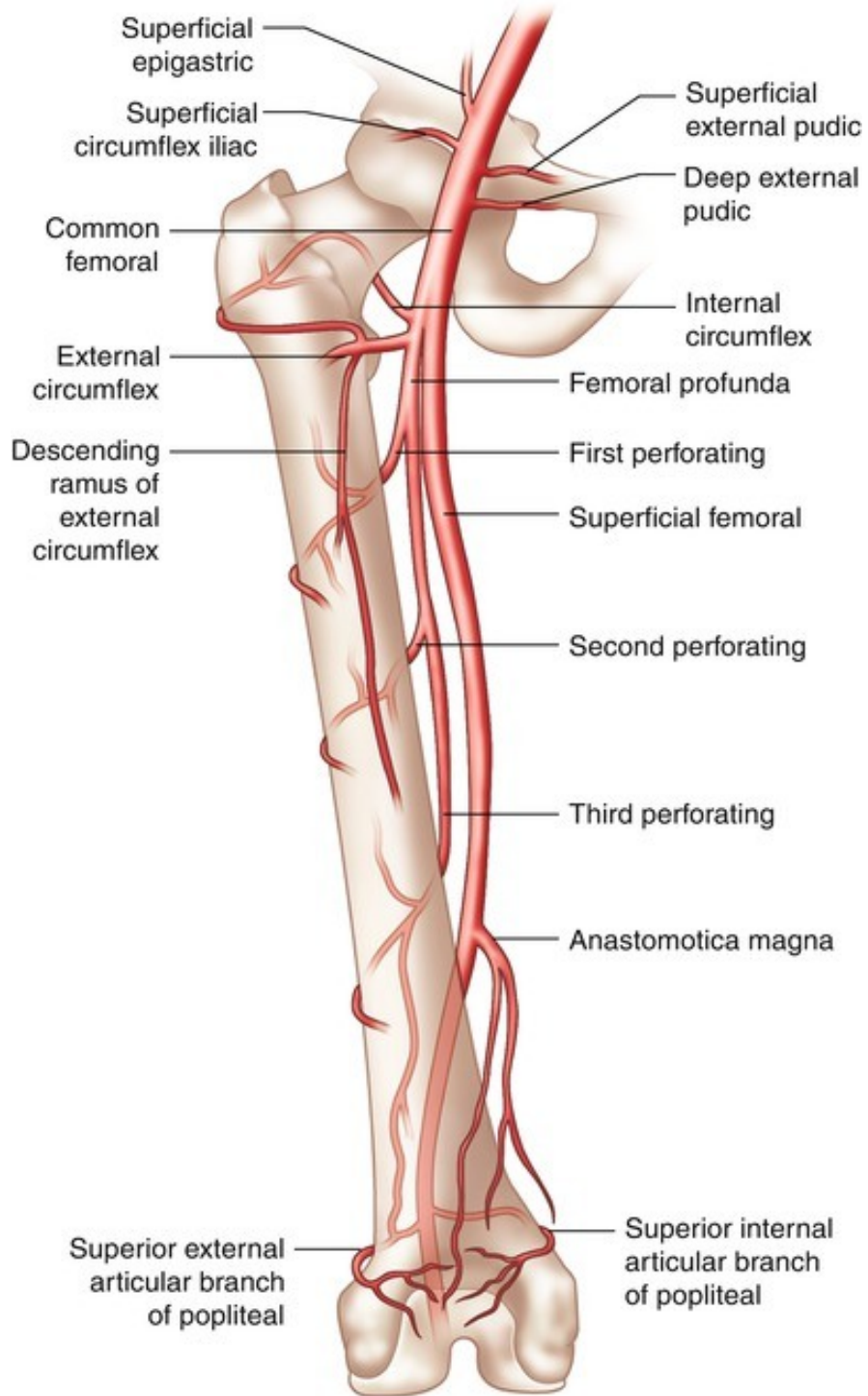


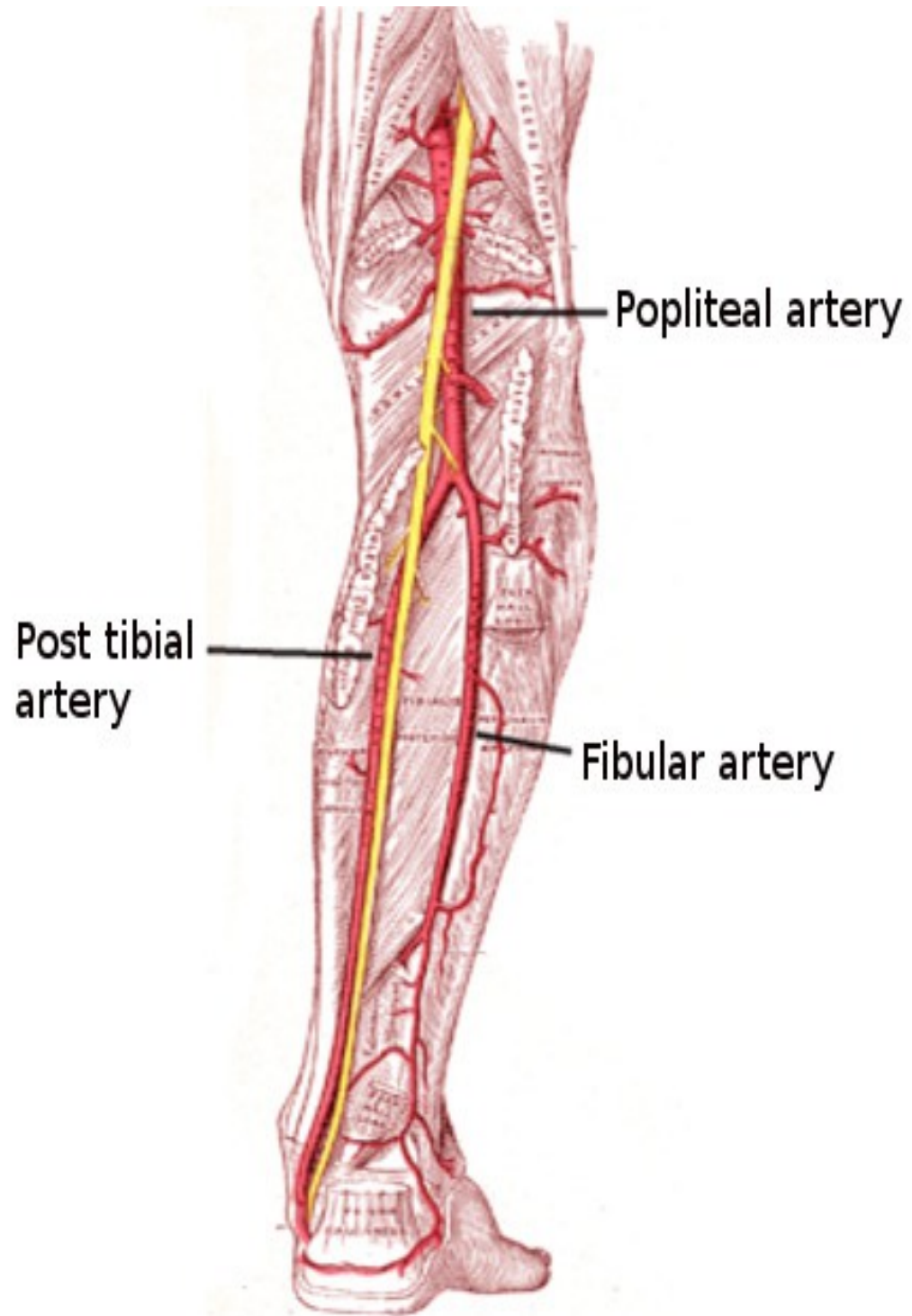


\*Source = internal carotid artery; all other labeled arteries are from external carotid

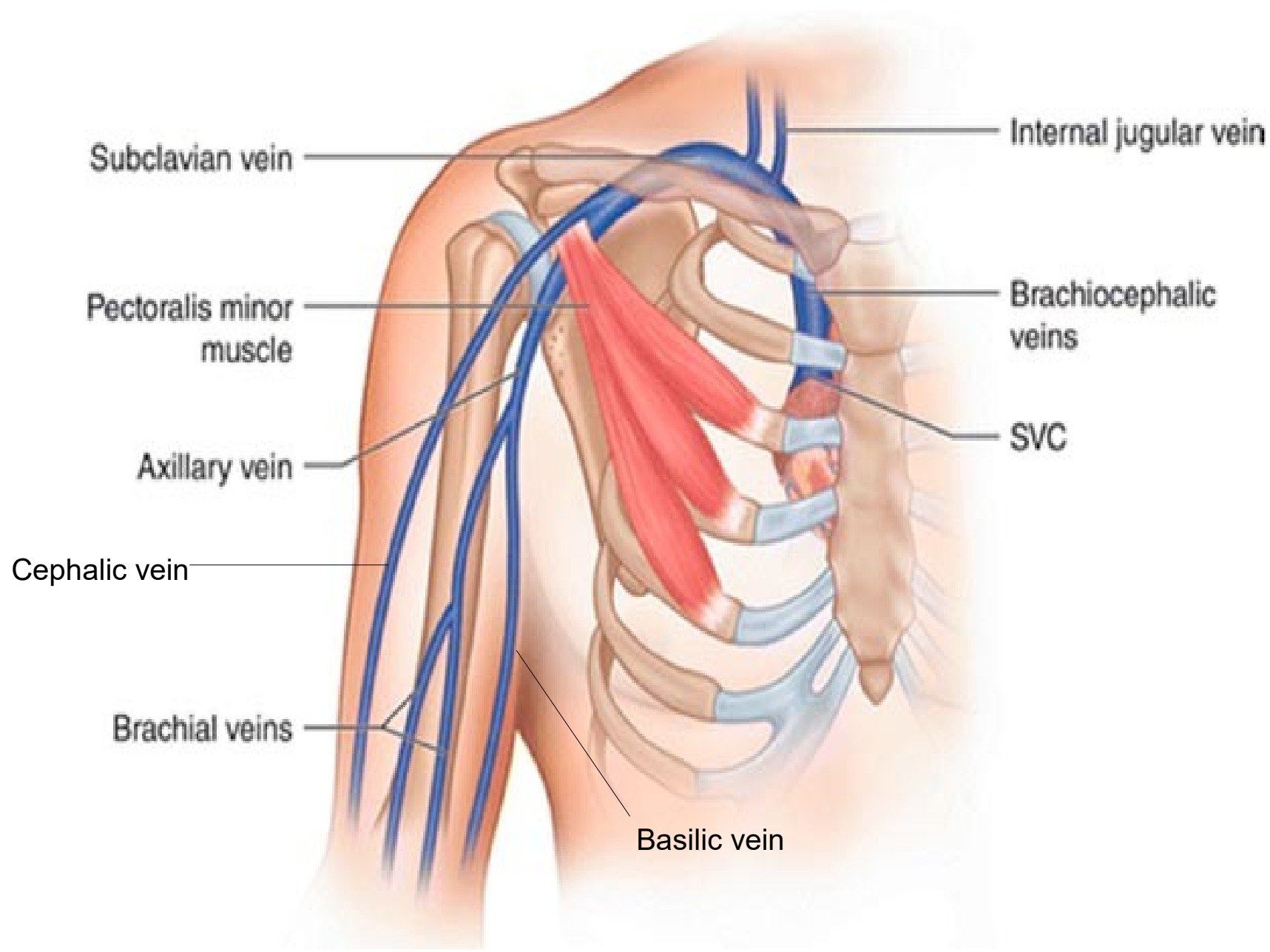








# Vein Learning Objectives



Subclavian vein

Internal jugular vein

Pectoralis minor muscle

Brachiocephalic veins

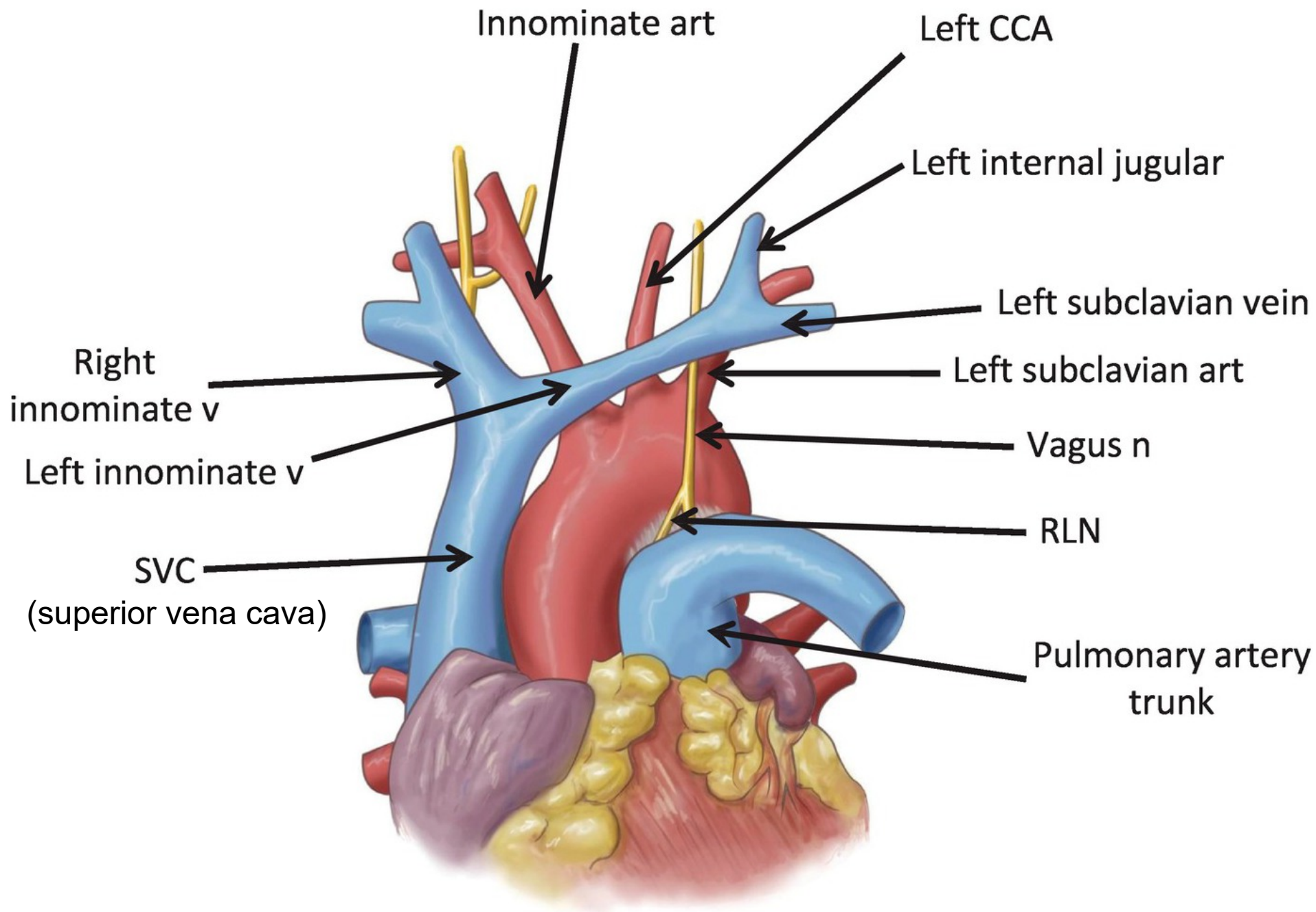
Axillary vein

SVC

Cephalic vein

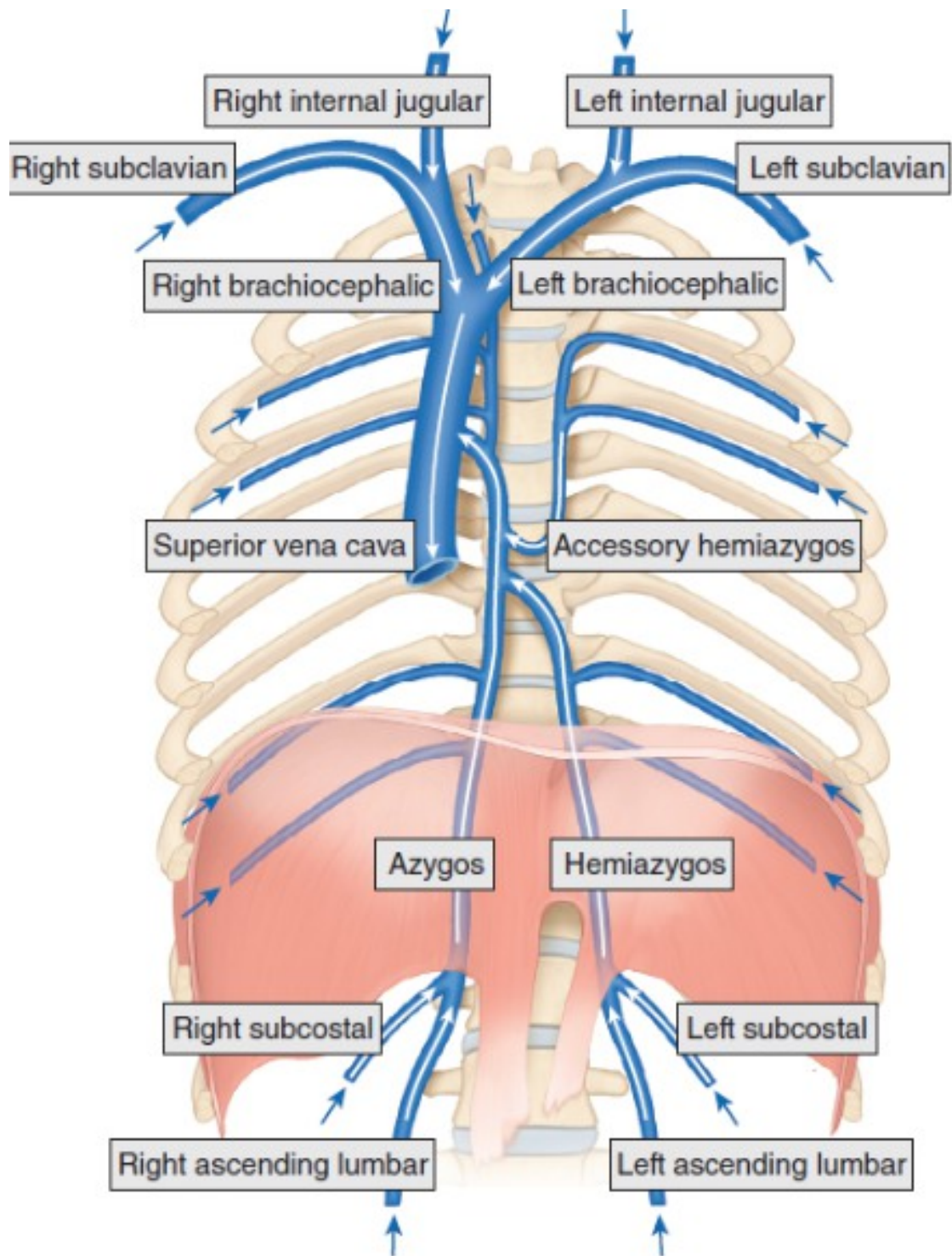
Brachial veins

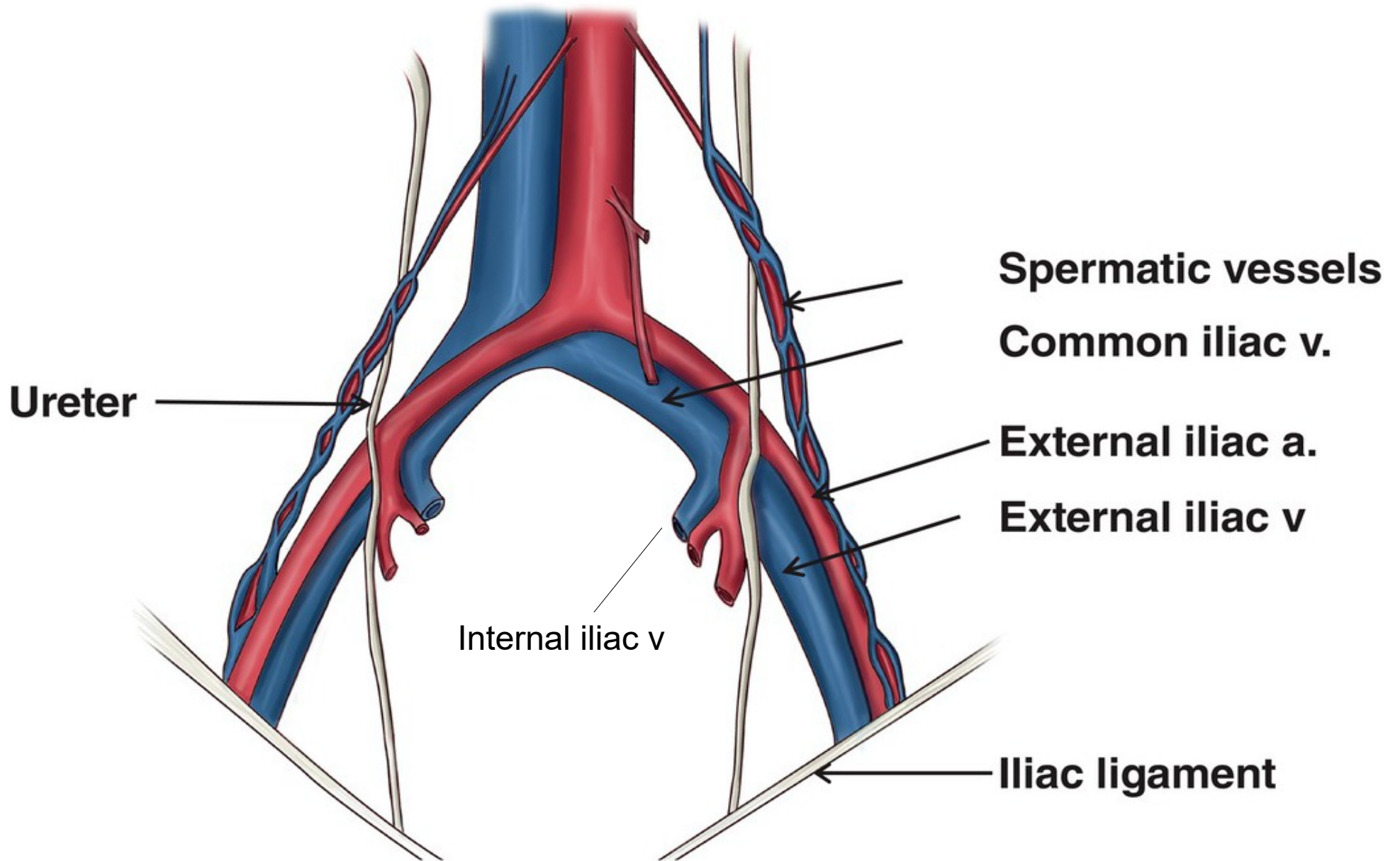
Basilic vein

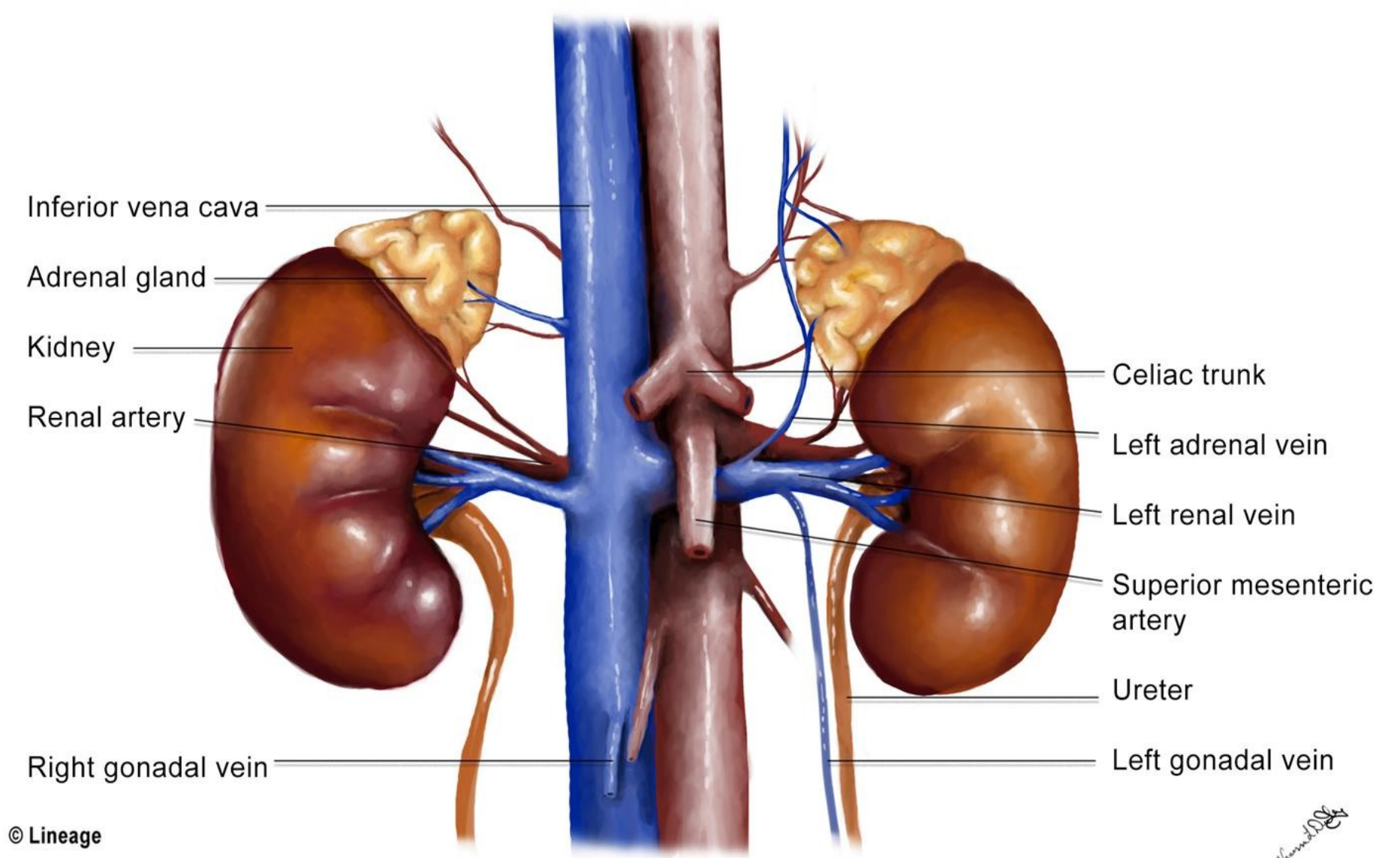


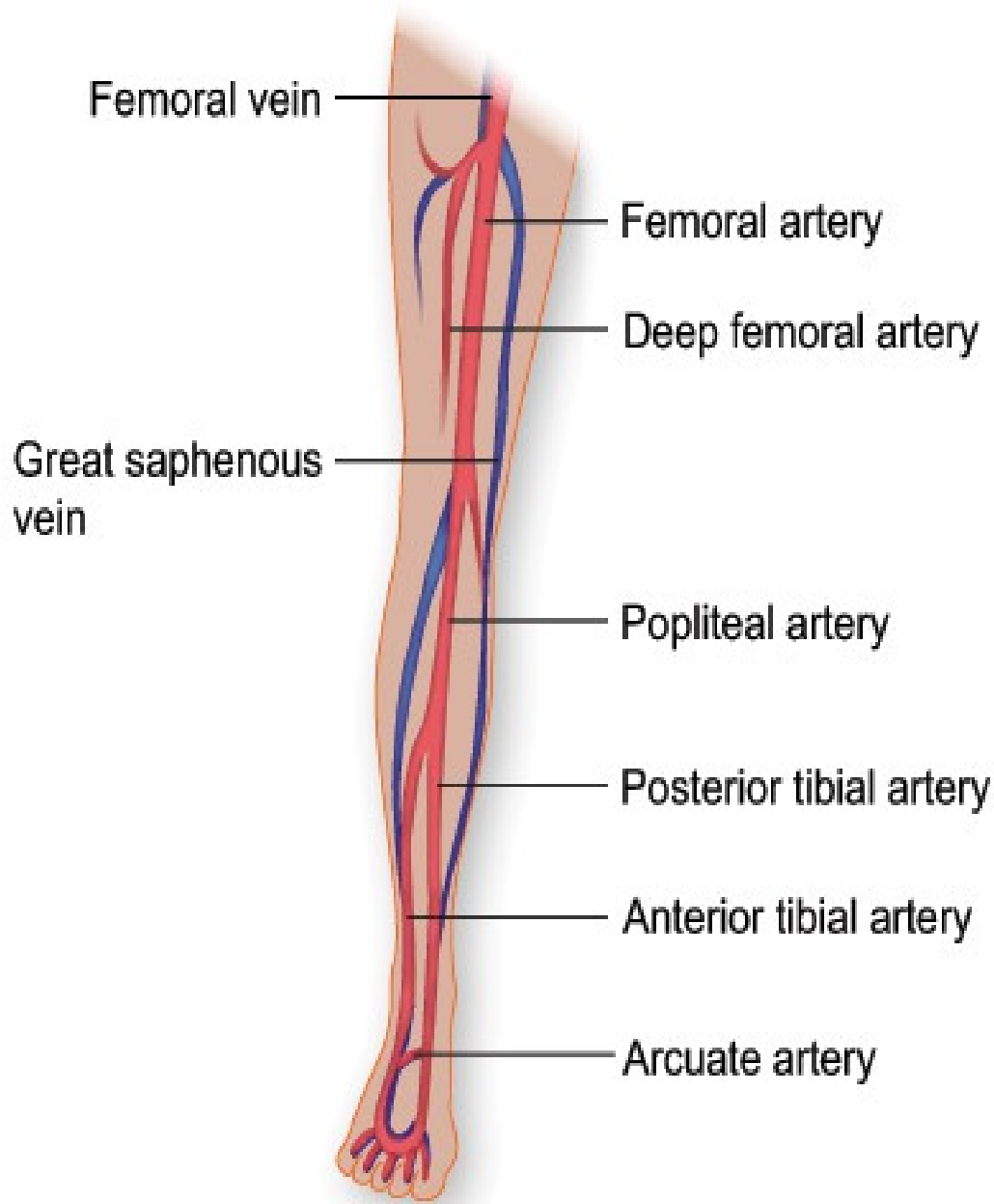
Innominate = Brachiocephalic



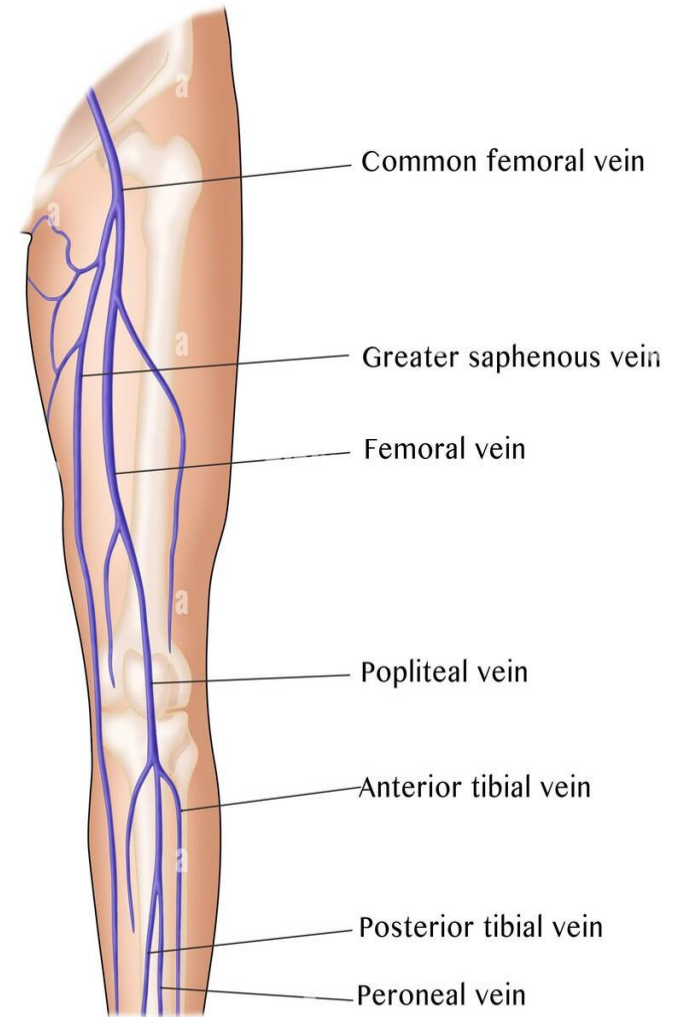


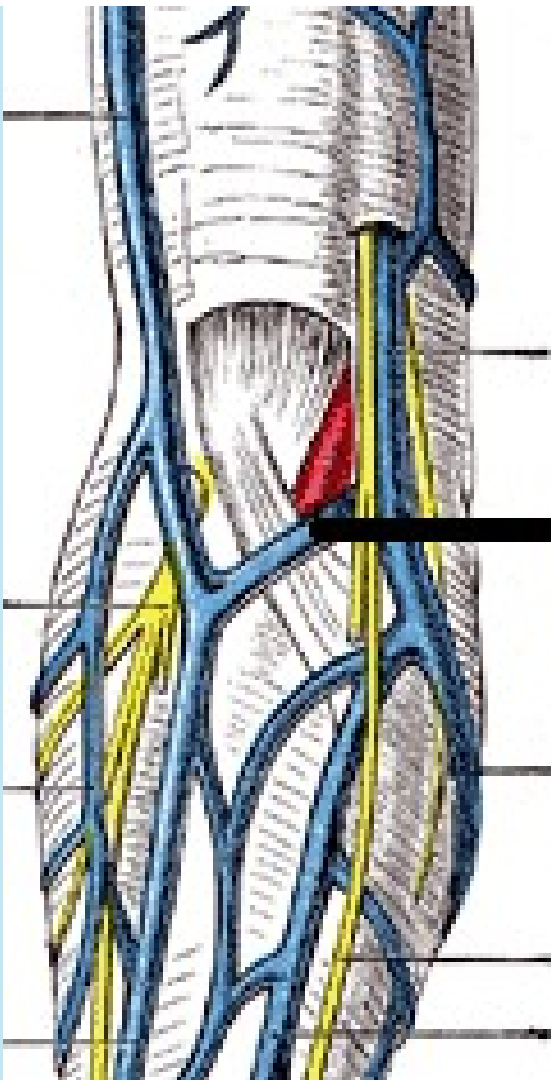
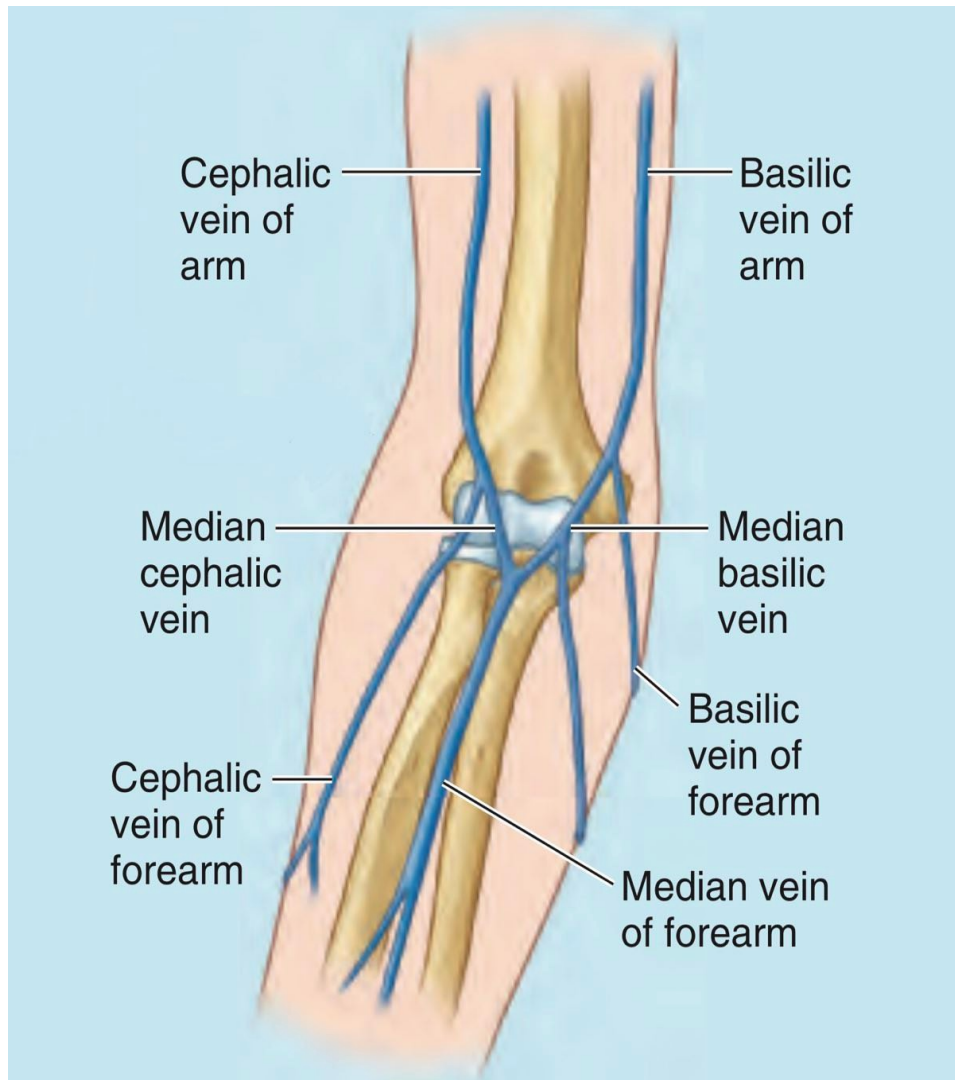




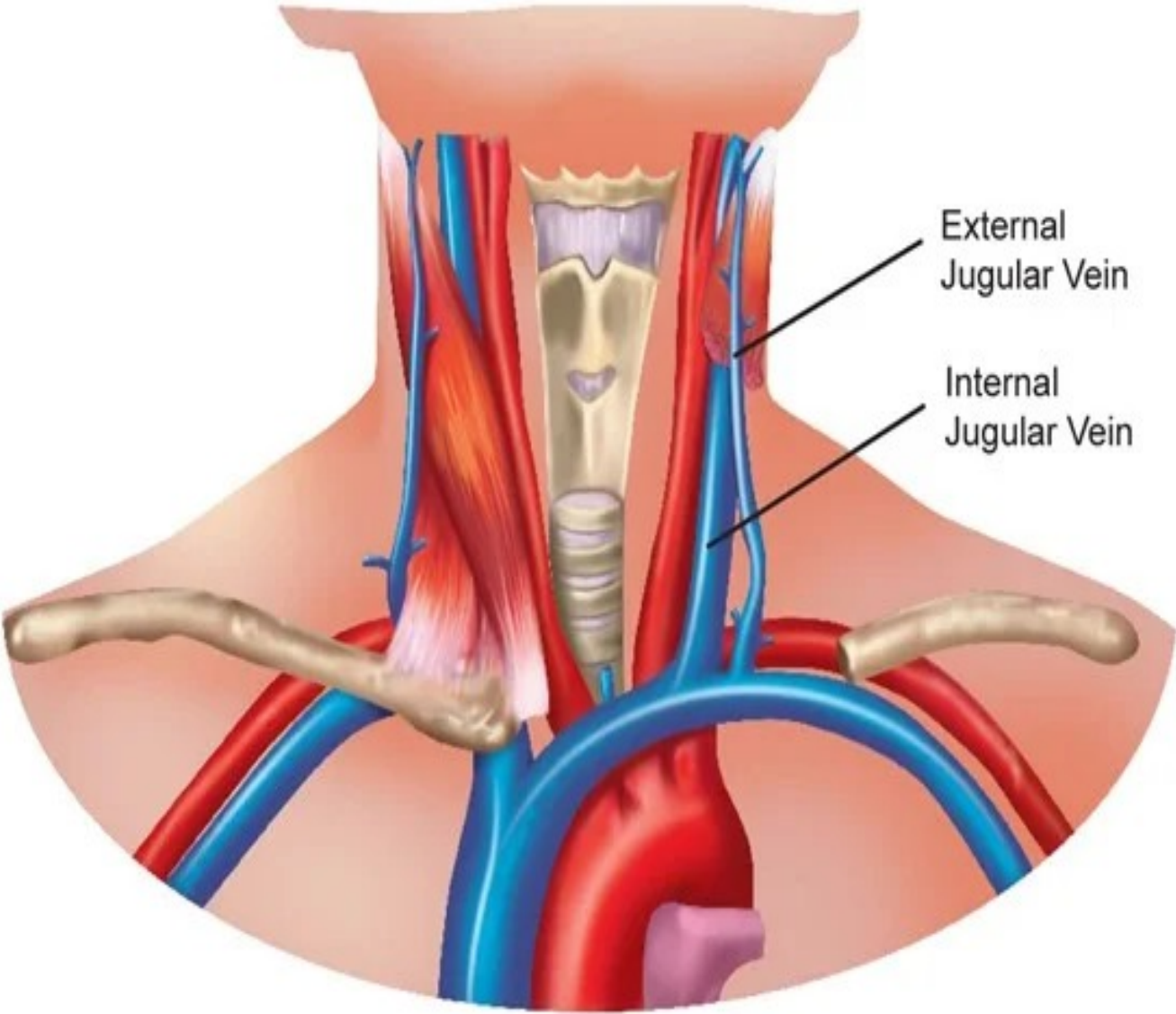


## Major Veins of the Legs





**Median  
Cubital Vein**



External  
Jugular Vein

Internal  
Jugular Vein