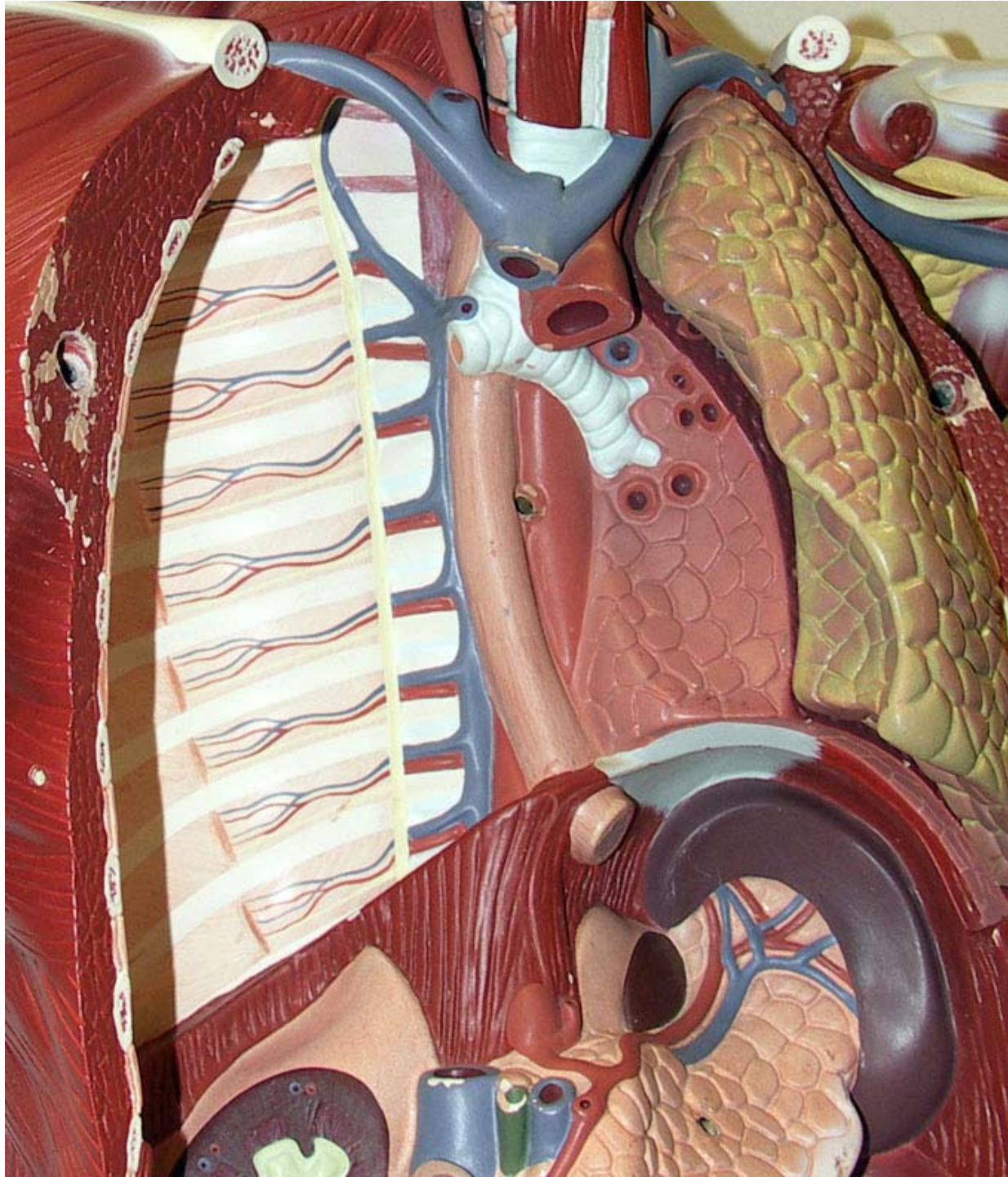


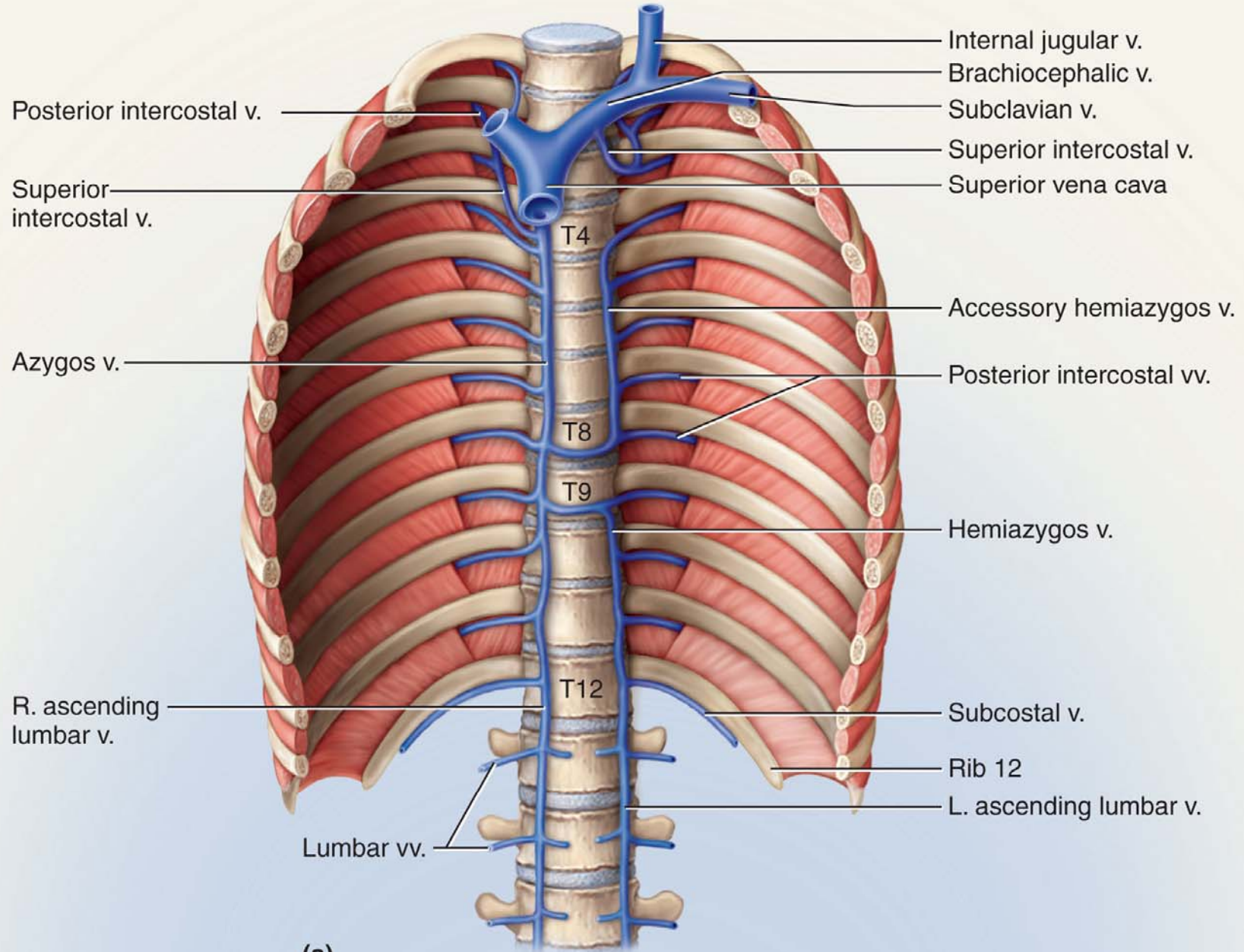
# The Azygus Vein

Human Torso Model









(a)

**FIGURE 20.28** Venous Drainage of the Posterior Wall of the Thorax and Abdomen. (a) The azygos system of the thoracic wall. This system provides venous drainage from the wall and viscera of the thorax, but the visceral tributaries are not illustrated. (b) Blood-flow schematic of the thoracic and abdominal drainage. The components above the diaphragm constitute the azygos system. There is a great deal of individual variation in this anatomy. **AP|R**

