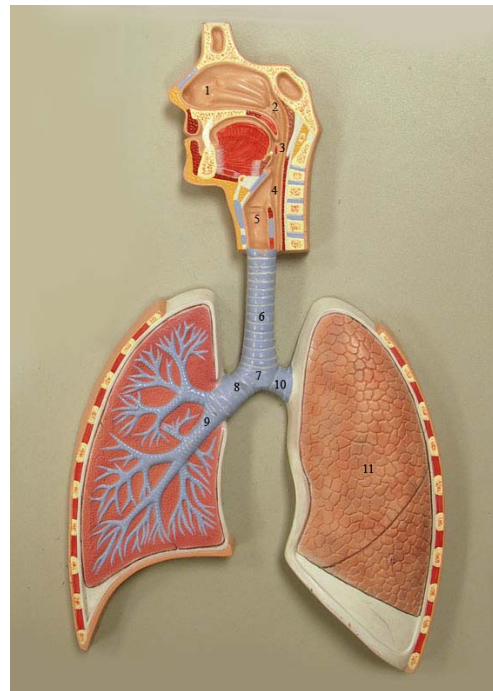
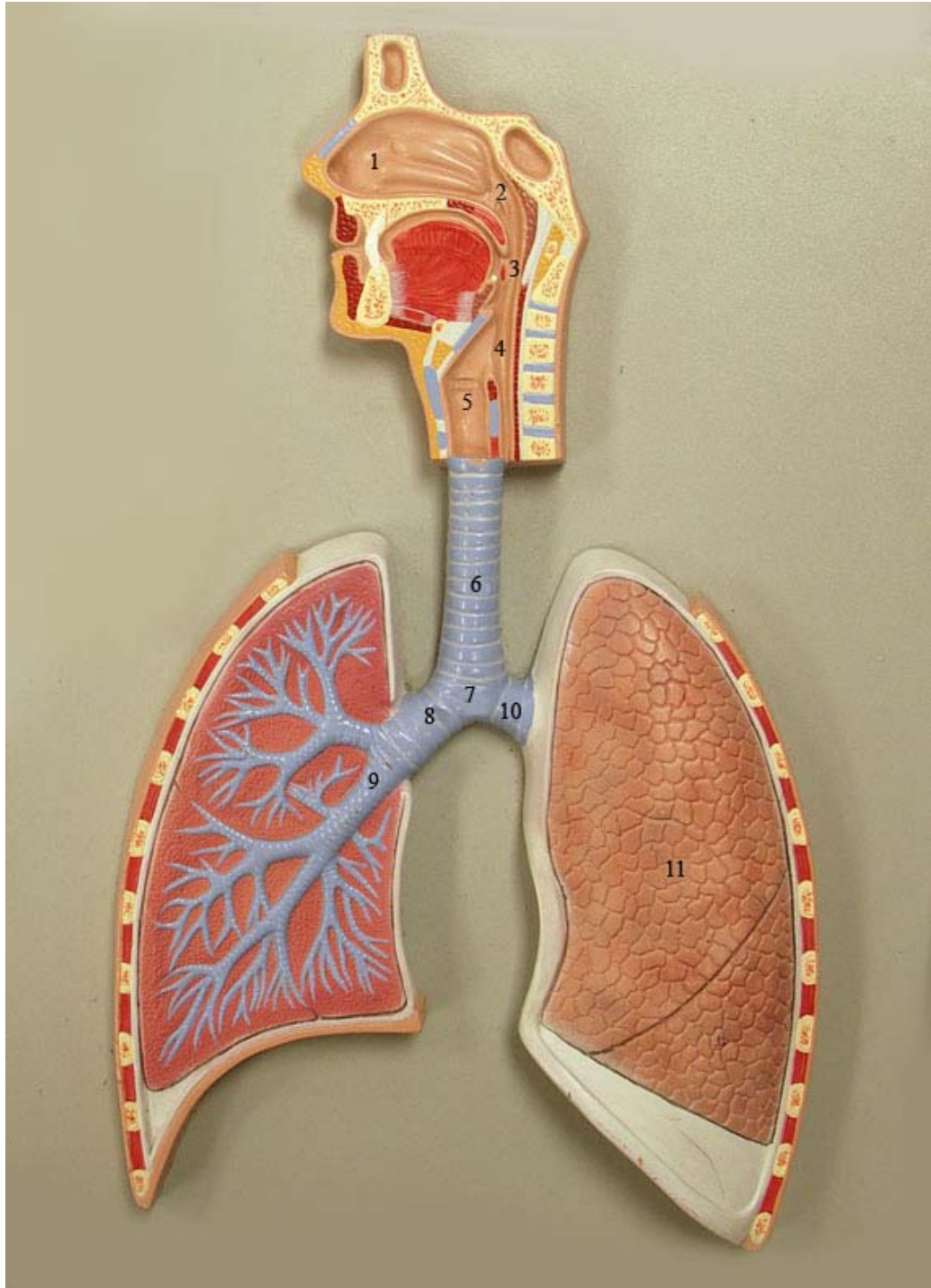
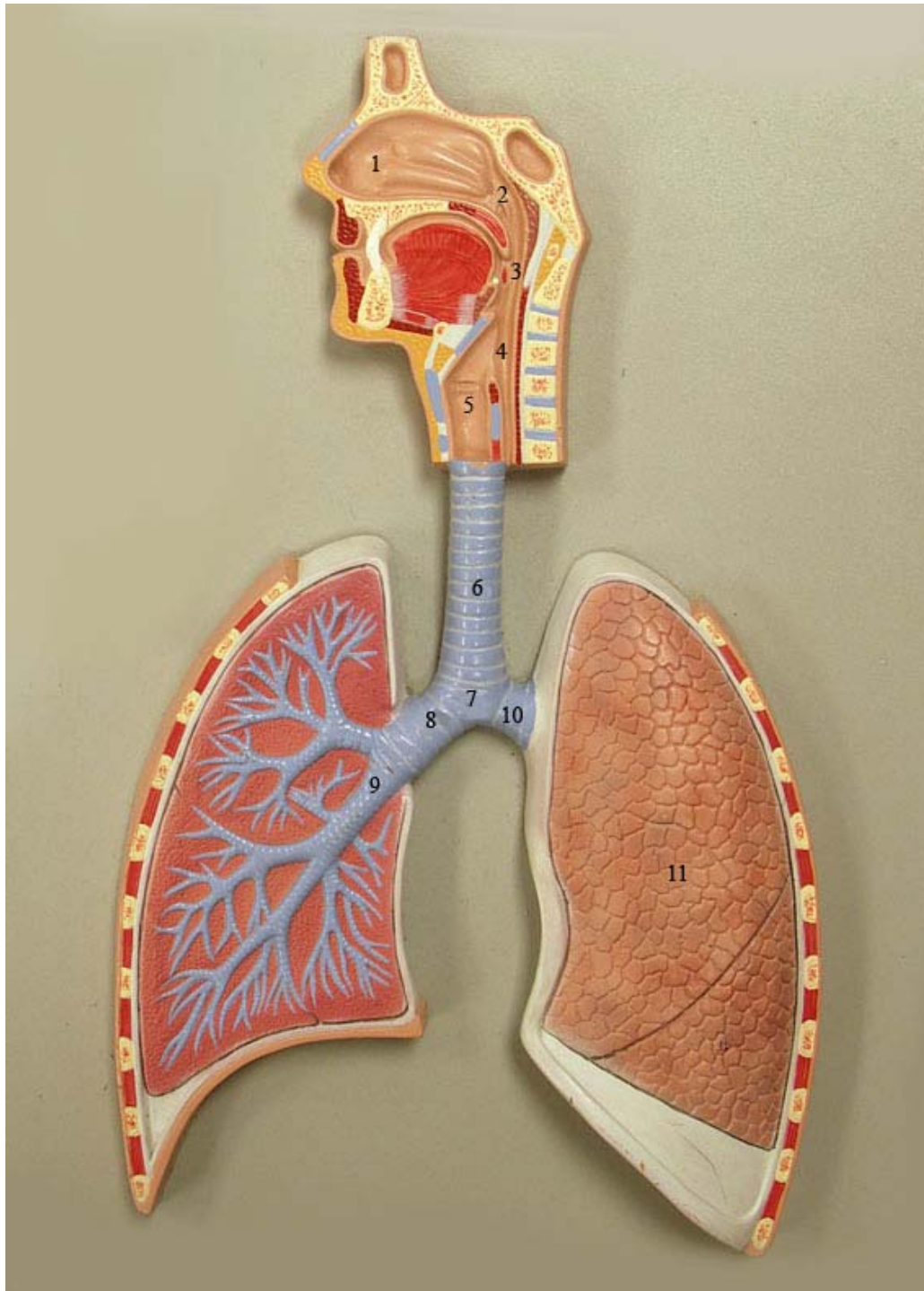


Respiratory System

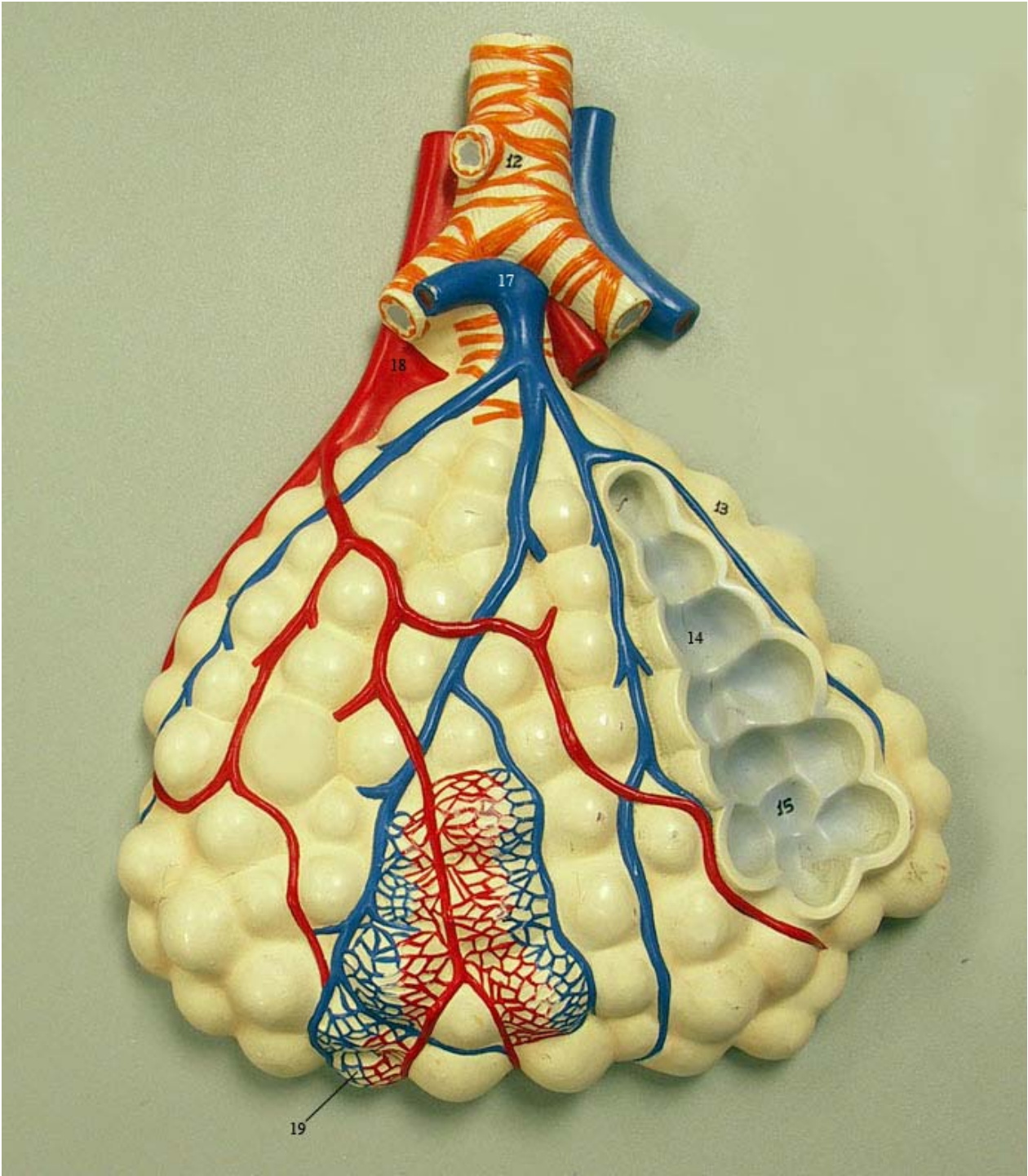
Air Conduction Pathway

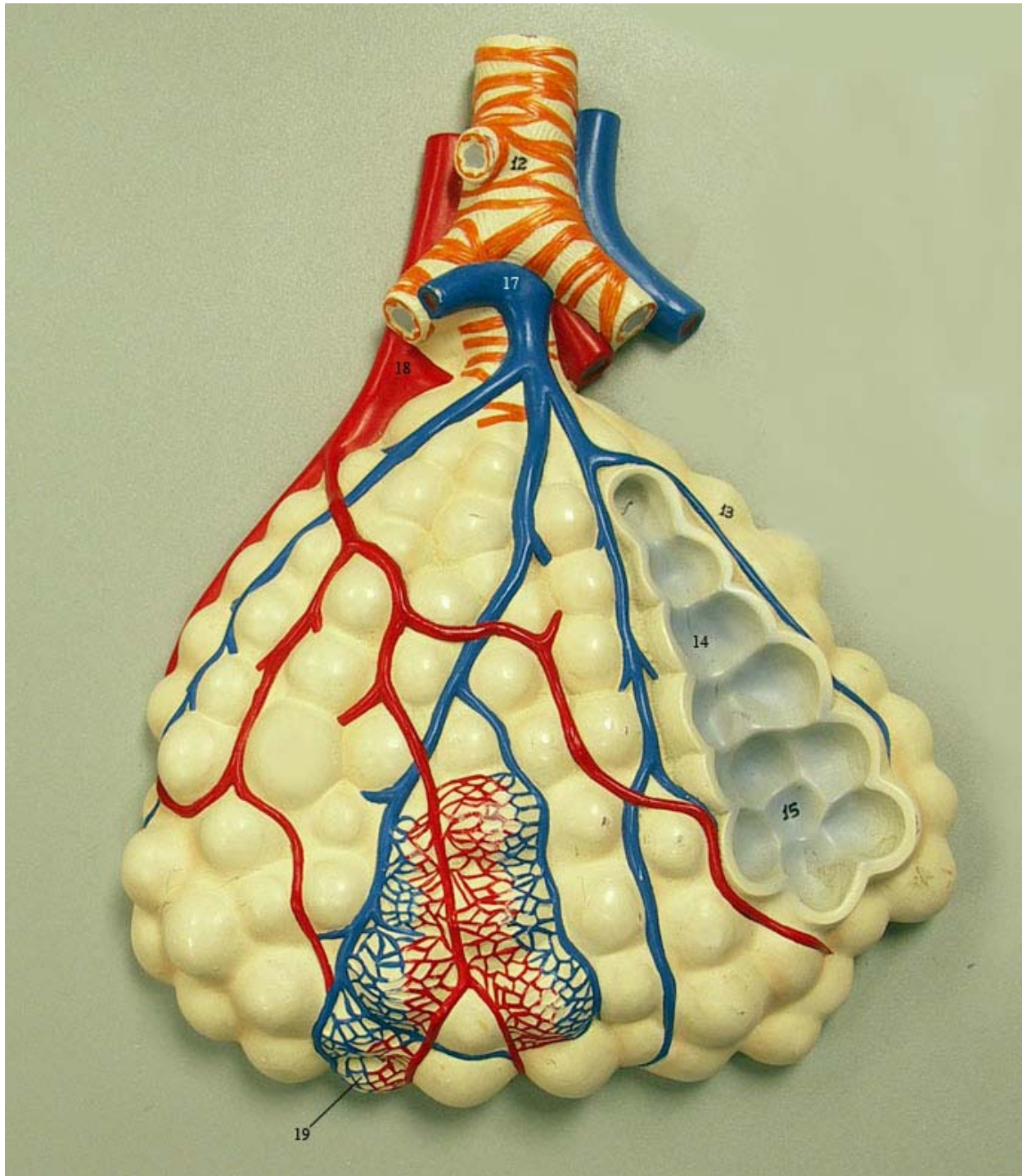






1. Nasal cavity
2. Nasopharynx
3. Oropharynx
4. Laryngopharynx
5. Laryngeal cavity
6. Trachea
7. Carina
8. Main right bronchus
9. Lobar bronchus
10. Main left bronchus
11. Superior lobe





- 12. Terminal bronchiole
- 13. Respiratory bronchiole
- 14. Alveolar duct
- 15. Alveolar sac
- 16. Pulmonary alveoli
- 17. Pulmonary artery
- 18. Pulmonary vein
- 19. Capillary plexuses

1. Nasal cavity
2. Nasopharynx
3. Oropharynx
4. Laryngopharynx
5. Laryngeal cavity
6. Trachea
7. Carina
8. Main right bronchus
9. Lobar bronchus
10. Main left bronchus
11. Superior lobe
12. Terminal bronchiole
13. Respiratory bronchiole
14. Alveolar duct
15. Alveolar sac
16. Pulmonary alveoli
17. Pulmonary artery
18. Pulmonary vein
19. Capillary plexuses

