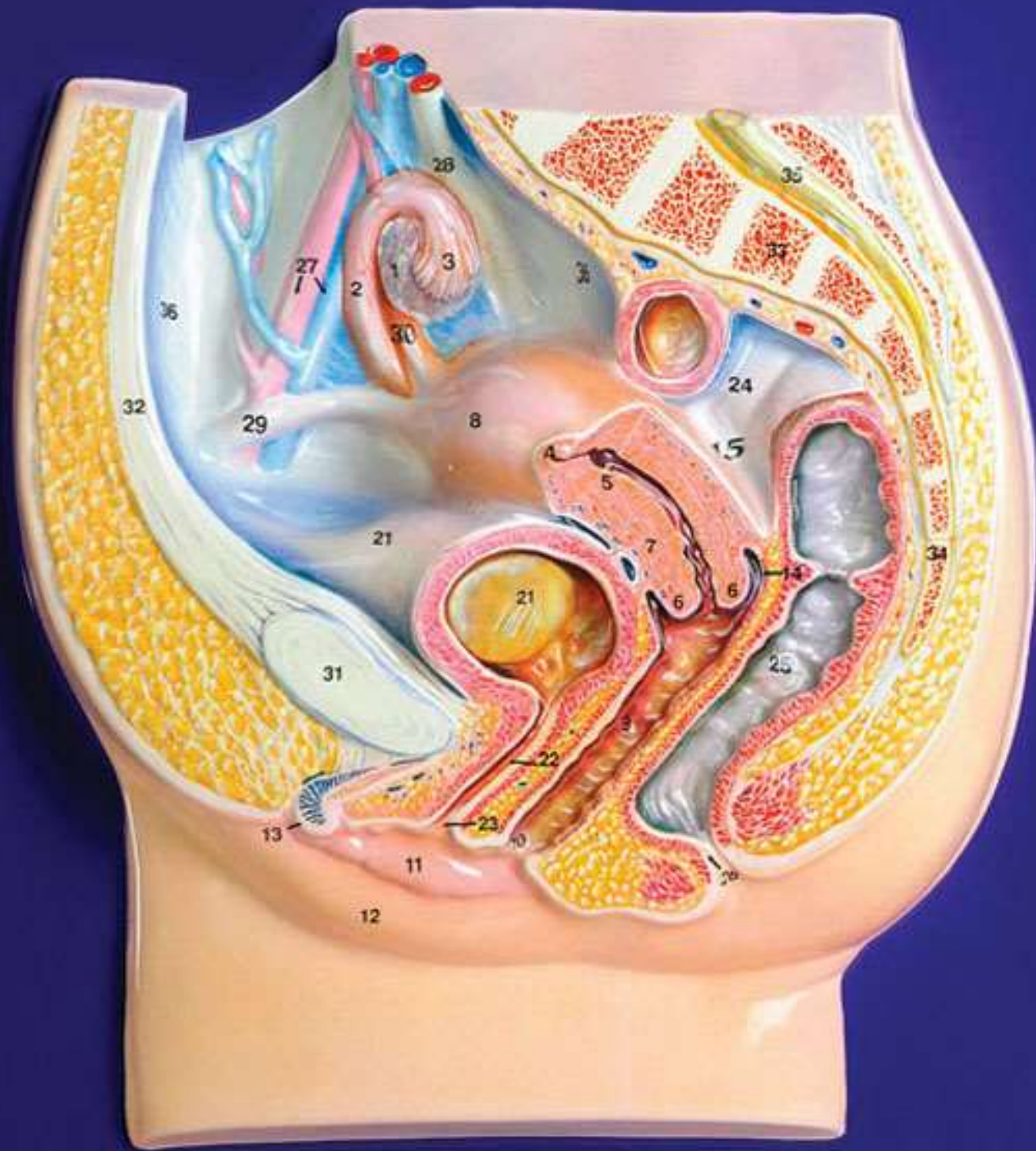


Female Reproductive System





KEY

Organs and structures primarily associated with reproduction

1. Ovary (one of two in body)
2. Fallopian tube (one of two in body)
3. Fimbria of the Fallopian tube
4. Juncture of lefthand Fallopian tube with uterus
5. Uterus, partly sectioned
6. Cervix or neck of the uterus
7. Isthmus of the uterus
8. Fundus of the uterus
9. Vagina
10. Vaginal opening or orifice
11. Labium minus (lesser lip of vulva)
12. Labium majus (greater lip of vulva)
13. Clitoris
14. Fornix of the uterus
15. Recto-uterine pouch of peritoneum

The ovum

16. Entire mature ovum
17. Nucleus
18. Cytoplasm of ovum
19. Zona pellucida
20. Granulosa cells of corona radiata

Other pelvic organs and structures

21. Urinary bladder
22. Urethra
23. Urethral opening or orifice
24. Colon (sigmoid)
25. Rectum
26. Anus
27. External iliac artery and vein
28. Hypogastric artery
29. Round ligament (sacro-uterine)
30. Ovarian ligament
31. Pubic symphysis
32. Linea alba (ligament/fascia between rectus abdominalis muscle)
33. Sacrum (vertebral bones)
34. Coccyx bone
35. Cauda equina (sacral nerve bundle)
36. Peritoneal cavity

