

Thoracic Cavity Compartments

Transverse Section

Identify these lab objective in this test module:

- Visceral pleura
- Parietal pleura
- Visceral pericardium (epicardium)
- Parietal pericardium
- Pericardial space
- Peripleural space

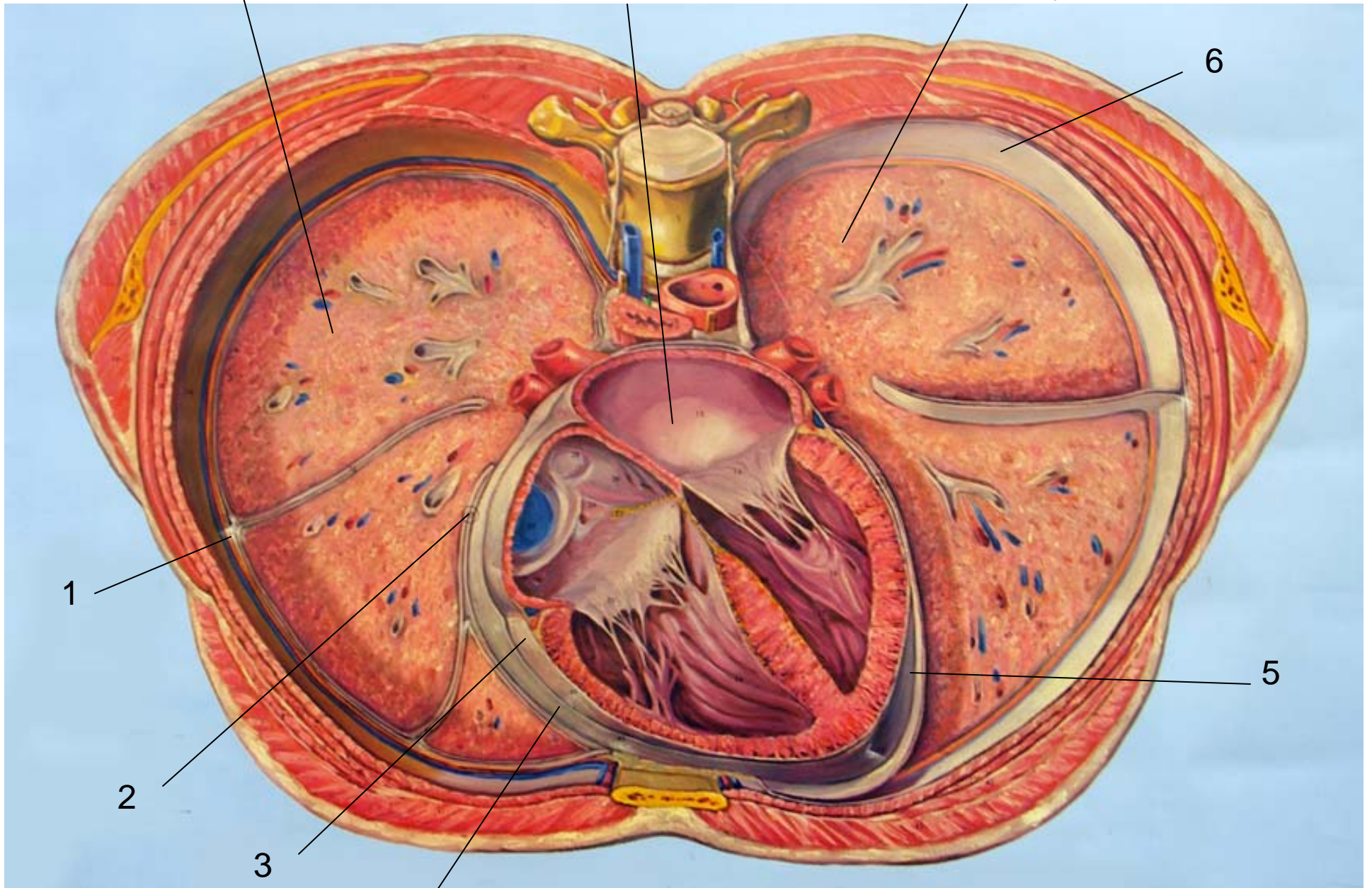
Note the following:

- Left lung parenchyma is partially deflated
- Different number of lobes in right and left lungs
- Position of heart with apex projecting into left pleural cavity

7 What cavity?

8 What cavity?

9 What cavity?



6

1

2

3

4

5

1. Parietal pleura
2. Visceral pleura
3. Visceral pericardium (epicardium)
4. Parietal pericardium
5. Pericardial cavity
6. Left pleural cavity
7. Right pleural cavity
8. Mediastinum
9. Left pleural cavity