

Body Cavities and Serous Membranes

(Note: identify these structures using anatomical wall charts and models)

Major Cavities

Ventral & Dorsal

Ventral Cavity (lungs, heart, all viscera of abdominal/pelvic cavity)

Thoracic (2 pleural cavities + 1 mediastinum cavity)

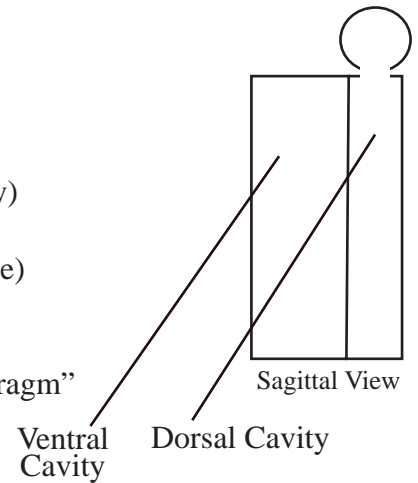
Abdominal/Pelvic (note: not separated by “true” membrane)

Abdomen

Pelvic

Note: Thoracic & Abdominal cavities separated by “diaphragm”

Dorsal Cavity (contains skull & vertebral column)



Serous Membranes

Located in “closed” cavities

Structure

Simple squamous epithelial with connective tissue supporting epithelial cells

Epithelial cells secrete “serous” (i.e. watery) solution / reduces friction

Three “Aspects” of the Serous Membranes

Parietal = covers outer margins of cavity

Visceral = covers objects within cavity

Retro = between the parietal membrane and the muscles that form the outer margins of cavity (e.g. retroperitoneal region / see location of kidneys)

Visceral Membranes

Epicardium (covers heart - also called visceral pericardium)

Visceral pleura (covers lungs)

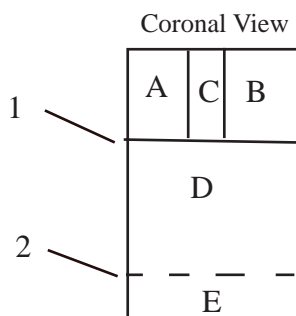
Visceral peritoneum (covers all organs in abdominal/pelvic cavity)

Parietal Membranes

Parietal pericardium (mediastinum cavity - heart)

Parietal Peritoneum (abdominal + pelvic cavity)

Parietal Pleura (2 pleura cavities - right & left lungs)



A = Rt Pleural Cavity

B = Lt Pleural Cavity

C = Mediastinum Cavity

D = Abdominal Cavity

E = Pelvic Cavity

D + E = Abdominalpelvic Cavity

1 = Diaphragm (separates thoracic and abdominal pelvic cavities)

2 = Greater Omentum wraps under intestines to “wall off” abdominal area from the pelvic area)

Serous Membranes Lining Body Cavities