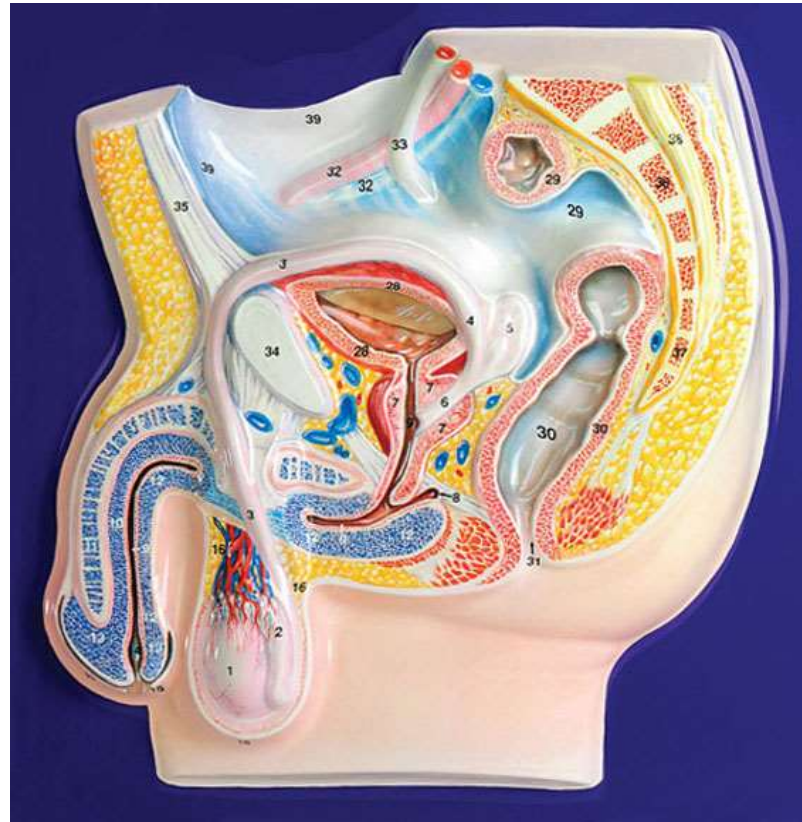


Male Reproductive System







KEY

Organs and structures primarily associated with reproduction

1. Testis (one of two in body)
2. Epididymis (one of two in body)
3. Ductus deferens (one of two in body)
4. Ampulla of ductus deferens
5. Seminal vesicle (one of two in body)
6. Ejaculatory duct
7. Prostate gland
8. Bulbourethral gland (one of two in body)
9. Urethra
10. Penis
11. Corpus cavernosum of penis
12. Corpus spongiosum of urethra
13. Glans of penis
14. Fossa navicularis of urethra
15. Prepuce or foreskin of penis
16. Scrotum

The spermatozoon

17. Head of sperm
18. Nucleus
19. Vacuole
20. Anterior head cap
21. Posterior head cap
22. Surface membrane
23. Neck
24. Body or middle piece
25. Axial filament
26. Mitochondria
27. Tail

Other pelvic organs and structures

28. Urinary bladder
29. Colon (sigmoid)
30. Rectum
31. Anus
32. External iliac artery and vein
33. Hypogastric artery
34. Pubic symphysis
35. Linea alba (ligament/fascia between rectus abdominalis muscle)
36. Sacrum (vertebral bones)
37. Coccyx bone
38. Cauda equina (sacral nerve bundle)
39. Peritoneal cavity