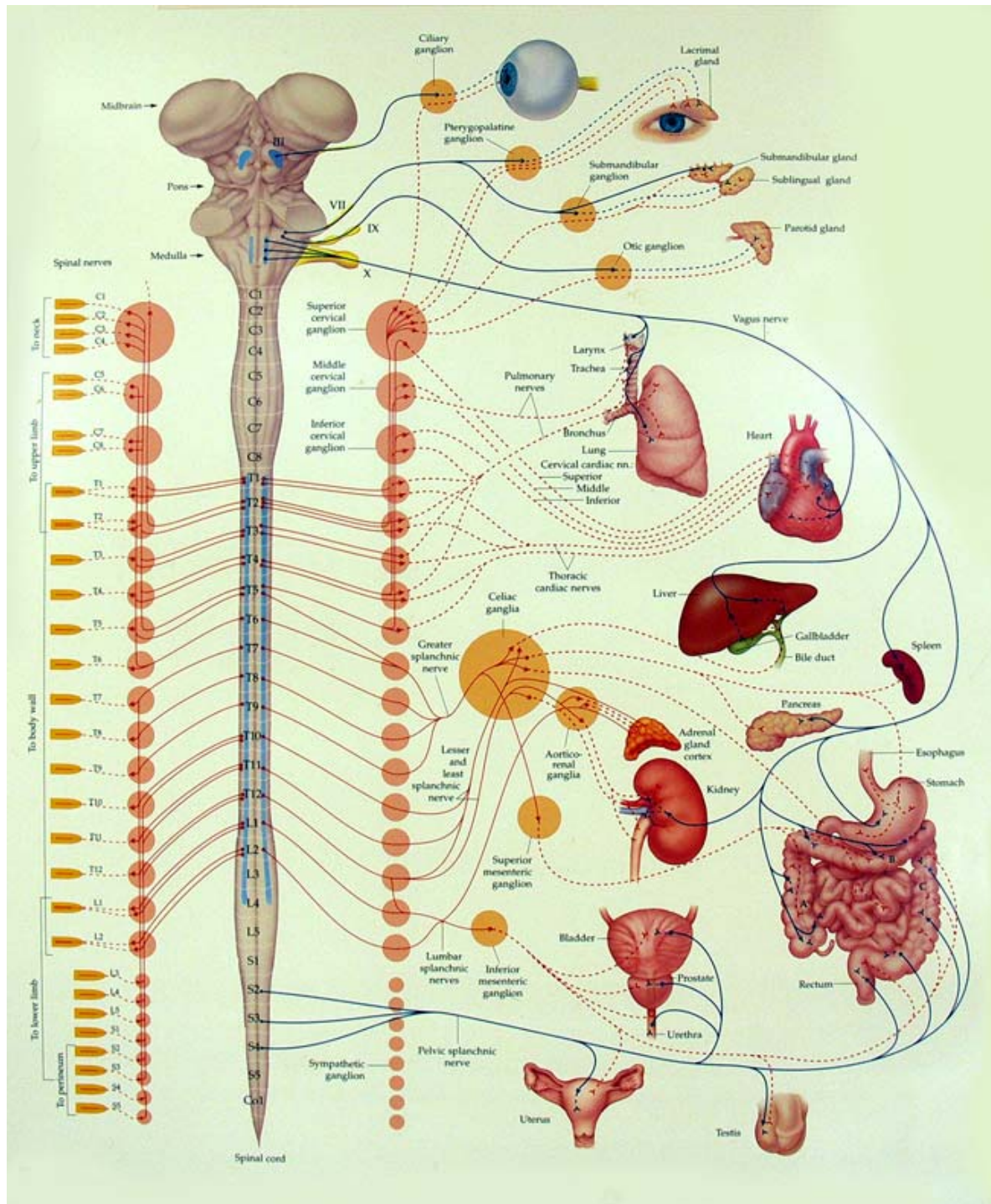
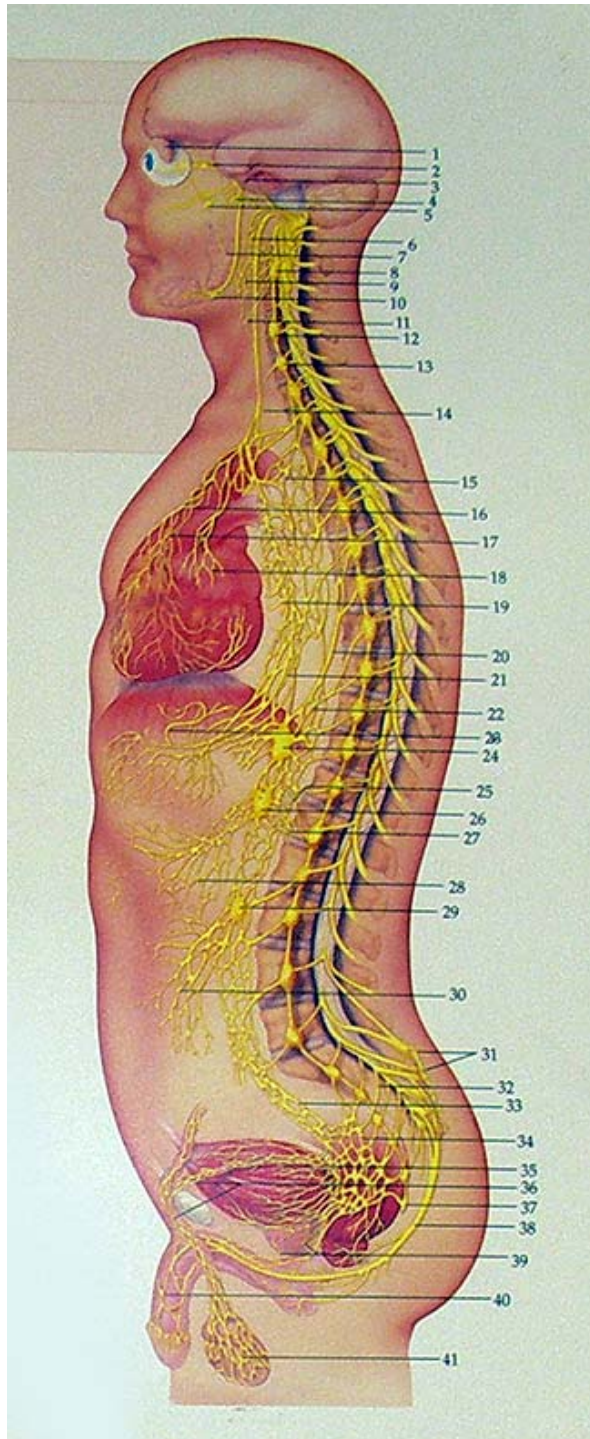


# Autonomic Nervous System

## Wall Chart Unit 2



- Blue lines** - Parasympathetic
- Red lines** - Sympathetic
- Solid lines** - Preganglionic motor neuron
- Dashed lines** - Postganglionic motor neuron
- III** - Oculomotor nerve
- VII** - Facial nerve
- IX** - Glossopharyngeal nerve
- X** - Vagus nerve



- |                               |                                         |
|-------------------------------|-----------------------------------------|
| 1. Lacrimal gland             | 12. Middle cervical ganglion            |
| 2. Ciliary ganglion           | 13. Inferior cervical ganglion          |
| 3. Trigeminal ganglion        | 14. Vagus nerve                         |
| 4. Otic ganglion              | 15. Aortic lymphatic plexus             |
| 5. Pterygopalatine ganglion   | 16. Cardiopulmonary plexus              |
| 6. Internal carotid plexus    | 17. Deep and superficial cardiac plexus |
| 7. Parotid gland              | 18. Bronchial branch of vagus nerve     |
| 8. Superior cervical ganglion | 19. Pulmonary plexus                    |
| 9. External carotid plexus    | 20. Greater splanchnic nerve            |
| 10. Submandibular ganglion    |                                         |
| 11. Carotid body              |                                         |

- |                                      |                                 |
|--------------------------------------|---------------------------------|
| 21. Esophageal plexus                | 31. Sacral plexus               |
| 22. Lesser splanchnic nerve          | 32. Pelvic splanchnic nerve     |
| 23. Gastric plexuses                 | 33. Superior hypogastric plexus |
| 24. Celiac ganglia and plexus        | 34. Inferior hypogastric plexus |
| 25. Nerve to adrenal gland (medulla) | 35. Vesical plexus              |
| 26. Superior mesenteric ganglion     | 36. Ductus deferens plexus      |
| 27. Renal plexus                     | 37. Ganglion impar              |
| 28. Superior mesenteric plexus       | 38. Pudendal nerve (somatic)    |
| 29. Inferior mesenteric ganglion     | 39. Prostatic plexus            |
| 30. Inferior mesenteric plexus       | 40. Dorsal nerve of penis       |
|                                      | 41. Testicular plexus           |